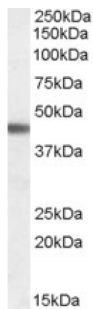


Adrenergic Receptor Beta 3 (ADRB3) Antibody

Catalogue No.: abx432290



abx432290 (0.03 µg/ml) staining of Human Brain (Cerebral Cortex) lysate (35 µg protein in RIPA buffer). Detected by chemiluminescence.

ADRB3 Antibody is a Goat Polyclonal antibody against ADRB3.

Target:	Adrenergic Receptor Beta 3 (ADRB3)
Clonality:	Polyclonal
Reactivity:	Human
Tested Applications:	P-ELISA, WB
Host:	Goat
Recommended dilutions:	P-ELISA: 1/128000. Optimal dilutions/concentrations should be determined by the end user.
Conjugation:	Unconjugated
Immunogen:	abx615261 - N-Terminus: PHENSSLAPWPD-C
Isotype:	IgG
Form:	Liquid
Purification:	Purified from goat serum by ammonium sulphate precipitation followed by antigen affinity chromatography using the immunizing peptide.
Storage:	Aliquot and store at -20°C. Avoid repeated freeze/thaw cycles.
Gene Symbol:	ADRB3
GeneID:	155
NCBI Accession:	NP_000016.1

Datasheet

Version: 2.0.0
Revision date: 11 Mar 2025



Buffer: Tris saline, pH 7.3, containing 0.02% sodium azide and 0.5% bovine serum albumin.

Concentration: 0.5 mg/ml

Note: THIS PRODUCT IS FOR RESEARCH USE ONLY. NOT FOR USE IN DIAGNOSTIC, THERAPEUTIC OR COSMETIC PROCEDURES. NOT FOR HUMAN OR ANIMAL CONSUMPTION.

For Reference Only