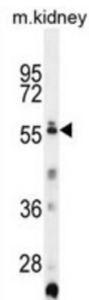


## Probable E3 Ubiquitin-Protein Ligase TRIML1 (TRIML1) Antibody

Catalogue No.: abx026462



Probable E3 ubiquitin-protein ligase which plays an important role in blastocyst development (By similarity).

<b>Target:</b>	Probable E3 Ubiquitin-Protein Ligase TRIML1 (TRIML1)
<b>Clonality:</b>	Polyclonal
<b>Reactivity:</b>	Mouse
<b>Tested Applications:</b>	ELISA, WB
<b>Host:</b>	Rabbit
<b>Recommended dilutions:</b>	WB: 1/1000. Optimal dilutions/concentrations should be determined by the end user.
<b>Conjugation:</b>	Unconjugated
<b>Immunogen:</b>	KLH-conjugated synthetic peptide between 376-404 amino acids from the C-terminal region of human TRIML1.
<b>Isotype:</b>	IgG
<b>Form:</b>	Liquid
<b>Purification:</b>	Purified through a protein A column, followed by peptide affinity purification.
<b>Storage:</b>	Aliquot and store at -20°C. Avoid repeated freeze/thaw cycles.
<b>UniProt Primary AC:</b>	Q8N9V2 ( <a href="#">UniProt</a> , <a href="#">ExPASy</a> )
<b>Gene Symbol:</b>	TRIML1
<b>KEGG:</b>	hsa:339976

# Datasheet

Version: 3.0.0  
Revision date: 12 Jan 2025



**String:** [9606.ENSF00000327738](#)

**Molecular Weight:** Calculated MW: 53 kDa

**Buffer:** PBS containing 0.09% sodium azide.

**Note:** This product is for research use only.

For Reference Only