

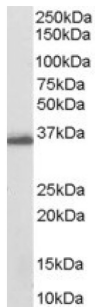
# Datasheet

Version: 2.0.0  
Revision date: 16 Sep 2024

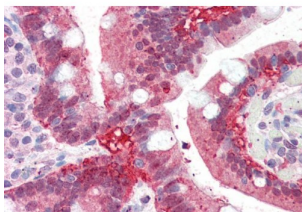


## Aldo-Keto Reductase Family 1 Member C3 (AKR1C3) Antibody

Catalogue No.: abx432302



abx432302 (0.03 µg/ml) staining of Human Breast lysate (35 µg protein in RIPA buffer).  
Detected by chemiluminescence.



abx432302 (5 µg/ml) staining of paraffin embedded Human Small Intestine. Steamed antigen retrieval with citrate buffer pH 6, AP-staining.

AKR1C3 Antibody is a Goat Polyclonal antibody against AKR1C3.

**Target:** Aldo-Keto Reductase Family 1 Member C3 (AKR1C3)

**Clonality:** Polyclonal

**Reactivity:** Human

**Tested Applications:** P-ELISA, WB, IHC

**Host:** Goat

**Recommended dilutions:** P-ELISA: 1/32000. Optimal dilutions/concentrations should be determined by the end user.

**Conjugation:** Unconjugated

**Immunogen:** [abx269622](#) - C-Terminus: CFASHPNYPYSDEY

**Isotype:** IgG

**Form:** Liquid

**Purification:** Purified from goat serum by ammonium sulphate precipitation followed by antigen affinity chromatography using the immunizing peptide.

# Datasheet

Version: 2.0.0  
Revision date: 16 Sep 2024



**Storage:** Aliquot and store at -20°C. Avoid repeated freeze/thaw cycles.

**Gene Symbol:** AKR1C3

**GeneID:** [8644](#)

**NCBI Accession:** NP\_003730.4

**Buffer:** Tris saline, pH 7.3, containing 0.02% sodium azide and 0.5% bovine serum albumin.

**Concentration:** 0.5 mg/ml

**Note:** This product is for research use only.

For Reference Only