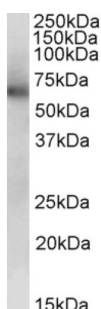


Aldehyde Dehydrogenase X, Mitochondrial (ALDH1B1) Antibody

Catalogue No.: abx432307



abx432307 (0.3 µg/ml) staining of Human Liver lysate (35 µg protein in RIPA buffer). Primary incubation was 1 hour. Detected by chemiluminescence.

ALDH1B1 Antibody is a Goat Polyclonal antibody against ALDH1B1.

Target:	Aldehyde Dehydrogenase X, Mitochondrial (ALDH1B1)
Clonality:	Polyclonal
Reactivity:	Human
Tested Applications:	P-ELISA, WB
Host:	Goat
Recommended dilutions:	P-ELISA: 1/4000. Optimal dilutions/concentrations should be determined by the end user.
Conjugation:	Unconjugated
Immunogen:	abx616284 - Internal region: C-DKEQFERVLGYIQ
Isotype:	IgG
Form:	Liquid
Purification:	Purified from goat serum by ammonium sulphate precipitation followed by antigen affinity chromatography using the immunizing peptide.
Storage:	Aliquot and store at -20°C. Avoid repeated freeze/thaw cycles.
Gene Symbol:	ALDH1B1
GeneID:	219
NCBI Accession:	NP_000683.3

Datasheet

Version: 2.0.0

Revision date: 22 Dec 2024



Buffer: Tris saline, pH 7.3, containing 0.02% sodium azide and 0.5% bovine serum albumin.

Concentration: 0.5 mg/ml

Note: This product is for research use only.

For Reference Only