

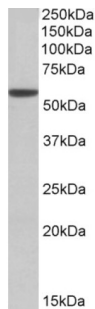
Datasheet

Version: 2.0.0
Revision date: 31 Dec 2024

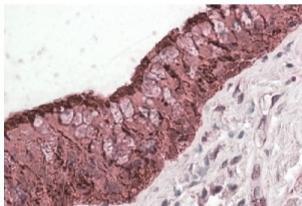


Aldehyde Dehydrogenase 3 Family Member A1 (ALDH3A1) Antibody

Catalogue No.: abx432308



abx432308 (0.01 µg/ml) staining of Mouse Eye lysate (35 µg protein in RIPA buffer). Primary incubation was 1 hour. Detected by chemiluminescence.



abx432308 (3.8 µg/ml) staining of paraffin embedded Human Lung. Steamed antigen retrieval with citrate buffer pH 6, AP-staining.

ALDH3A1 Antibody is a Goat Polyclonal antibody against ALDH3A1.

Target: Aldehyde Dehydrogenase 3 Family Member A1 (ALDH3A1)

Clonality: Polyclonal

Reactivity: Human, Mouse

Tested Applications: P-ELISA, WB, IHC

Host: Goat

Recommended dilutions: P-ELISA: 1/32000. Optimal dilutions/concentrations should be determined by the end user.

Conjugation: Unconjugated

Immunogen: [abx616283](#) - C-Terminus: C-RYPPSPAKMTQH

Isotype: IgG

Form: Liquid

Purification: Purified from goat serum by ammonium sulphate precipitation followed by antigen affinity chromatography using the immunizing peptide.

Datasheet

Version: 2.0.0

Revision date: 31 Dec 2024



Storage:	Aliquot and store at -20°C. Avoid repeated freeze/thaw cycles.
Gene Symbol:	ALDH3A1
GeneID:	218
NCBI Accession:	NP_000682.3
Buffer:	Tris saline, pH 7.3, containing 0.02% sodium azide and 0.5% bovine serum albumin.
Concentration:	0.5 mg/ml
Note:	This product is for research use only.

For Reference Only