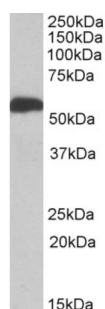


Aldehyde Dehydrogenase 5 Family Member A1 (ALDH5A1) Antibody

Catalogue No.: abx431648



abx431648 (1 µg/ml) staining of Human Liver lysate (35 µg protein in RIPA buffer). Primary incubation was 1 hour. Detected by chemiluminescence.

ALDH5A1 Antibody is a Goat Polyclonal antibody against ALDH5A1.

Target:	Aldehyde Dehydrogenase 5 Family Member A1 (ALDH5A1)
Clonality:	Polyclonal
Reactivity:	Human, Mouse, Rat
Tested Applications:	P-ELISA, WB, IHC
Host:	Goat
Recommended dilutions:	P-ELISA: 1/16000. Optimal dilutions/concentrations should be determined by the end user.
Conjugation:	Unconjugated
Immunogen:	abx616404 - Internal region, 301-312 AA: C-TGKILLHHAANS
Isotype:	IgG
Form:	Liquid
Purification:	Purified from goat serum by ammonium sulphate precipitation followed by antigen affinity chromatography using the immunizing peptide.
Storage:	Aliquot and store at -20°C. Avoid repeated freeze/thaw cycles.
Gene Symbol:	ALDH5A1
GeneID:	7915 214579 291133
NCBI Accession:	NP_733936.1, NP_001071.1

Datasheet

Version: 2.0.0
Revision date: 22 Dec 2024



Buffer: Tris saline, pH 7.3, containing 0.02% sodium azide and 0.5% bovine serum albumin.

Concentration: 0.5 mg/ml

Note: This product is for research use only.

For Reference Only