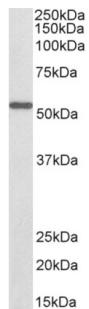


Datasheet

Version: 1.0.0
Revision date: 22 Dec 2024

ALDH6A1 Antibody (Biotin)

Catalogue No.: abx431016



Western blot analysis of Mouse Kidney lysate (35 µg protein in RIPA buffer) using biotin-conjugated ALDH6A1 Antibody (0.1 µg/ml, 1 hour). Detected by chemiluminescence, using streptavidin-HRP and using NAP blocker as a substitute for skimmed milk.

ALDH6A1 Antibody is a Goat Polyclonal antibody against ALDH6A1 ([abx431015](#)) conjugated to biotin.

Target:	ALDH6A1
Clonality:	Polyclonal
Reactivity:	Human, Mouse, Rat
Tested Applications:	P-ELISA, WB
Host:	Goat
Recommended dilutions:	P-ELISA: 1/32000. Optimal dilutions/concentrations should be determined by the end user.
Conjugation:	Biotin
Immunogen:	Internal region, 487-496 AA: C-SRSSFRGDTN
Isotype:	IgG
Form:	Liquid
Purification:	Purified from goat serum by ammonium sulphate precipitation followed by antigen affinity chromatography using the immunizing peptide.
Storage:	Aliquot and store at -20°C. Avoid repeated freeze/thaw cycles.
Gene Symbol:	ALDH6A1
GeneID:	4329 104776 81708
NCBI Accession:	NP_005580.1, NP_001265522.1, NP_001265523.1

Datasheet

Version: 1.0.0
Revision date: 22 Dec 2024



Buffer: Tris saline, pH 7.3, containing 0.02% sodium azide and 0.5% bovine serum albumin.

Concentration: 0.5 mg/ml

Note: This product is for research use only.

For Reference Only