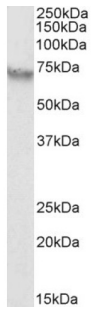
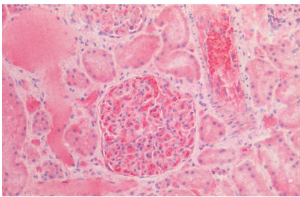


Alpha Fetoprotein (AFP) Antibody

Catalogue No.: abx432318



abx432318 (0.3 µg/ml) staining of HepG2 lysate (35 µg protein in RIPA buffer). Primary incubation was 1 hour. Detected by chemiluminescence.



abx432318 (5 µg/ml) staining of paraffin embedded Human Kidney. Steamed antigen retrieval with citrate buffer pH 6, AP-staining.

alpha-fetoprotein Antibody is a Goat Polyclonal antibody against alpha-fetoprotein.

Target: Alpha Fetoprotein (AFP)

Clonality: Polyclonal

Reactivity: Human

Tested Applications: P-ELISA, WB, IHC

Host: Goat

Recommended dilutions: P-ELISA: 1/128000, WB: 0.3-1 µg/ml, IHC: 5 µg/ml. Optimal dilutions/concentrations should be determined by the end user.

Conjugation: Unconjugated

Immunogen: Internal region, 68-82 AA: C-KDALTAIEKPTGDEQ

Isotype: IgG

Form: Liquid

Purification: Purified from goat serum by ammonium sulphate precipitation followed by antigen affinity chromatography using the immunizing peptide.

Datasheet

Version: 2.0.0
Revision date: 16 Feb 2025



Storage: Aliquot and store at -20°C. Avoid repeated freeze/thaw cycles.

Gene Symbol: AFP

GeneID: [174](#)

NCBI Accession: NP_001125.1

Buffer: Tris saline, pH 7.3, containing 0.02% sodium azide and 0.5% bovine serum albumin.

Concentration: 0.5 mg/ml

Note: This product is for research use only.

For Reference Only