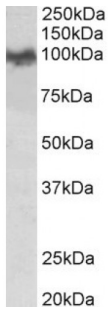
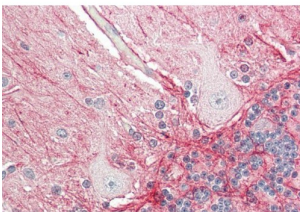


## Amyloid beta peptide Antibody

Catalogue No.: abx431103



abx431103 (0.03 µg/ml) staining of Mouse Brain lysate (35 µg protein in RIPA buffer).  
Detected by chemiluminescence.



abx431103 (5 µg/ml) staining of paraffin embedded Human Cerebellum. Steamed antigen retrieval with citrate buffer Ph 6, AP-staining.

Amyloid beta peptide Antibody is a Goat Polyclonal antibody against Amyloid beta peptide.

**Target:** Amyloid beta peptide

**Clonality:** Polyclonal

**Reactivity:** Human, Mouse

**Tested Applications:** P-ELISA, WB, IHC

**Host:** Goat

**Recommended dilutions:** P-ELISA: 1/64000. Optimal dilutions/concentrations should be determined by the end user.

**Conjugation:** Unconjugated

**Immunogen:** [abx616682](#) - N-Terminus: DAEFGHDSGFVVRHQK-C

**Isotype:** IgG

**Form:** Liquid

**Purification:** Purified from goat serum by ammonium sulphate precipitation followed by antigen affinity chromatography using the immunizing peptide.

# Datasheet

Version: 2.0.0  
Revision date: 26 Jun 2024



**Storage:** Aliquot and store at -20°C. Avoid repeated freeze/thaw cycles.

**Gene Symbol:** APP

**GeneID:** [11820](#) [54226](#)

**NCBI Accession:** NP\_001185752.1, NP\_031497.2, NP\_001185753.1, NP\_001185754.1, NP\_001185755.1

**Buffer:** Tris saline, pH 7.3, containing 0.02% sodium azide and 0.5% bovine serum albumin.

**Concentration:** 0.5 mg/ml

**Note:** This product is for research use only.

For Reference Only