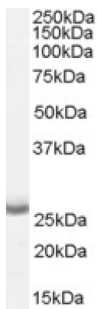
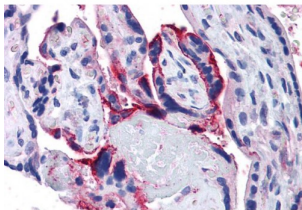


Gamma Secretase Subunit APH-1A (APH1A) Antibody

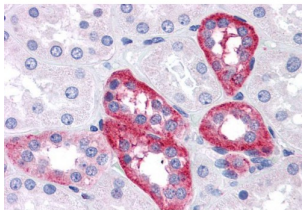
Catalogue No.: abx432333



abx432333 (0.05 µg/ml) staining of Human Brain (Cerebral Cortex) lysate (35 µg protein in RIPA buffer). Detected by chemiluminescence.



abx432333 (5 µg/ml) staining of paraffin embedded Human Placenta. Steamed antigen retrieval with citrate buffer pH 6, AP-staining.



abx432333 (5 µg/ml) staining of paraffin embedded Human Kidney. Steamed antigen retrieval with citrate buffer pH 6, AP-staining.

APH1A Antibody is a Goat Polyclonal antibody against APH1A.

Target: Gamma Secretase Subunit APH-1A (APH1A)

Clonality: Polyclonal

Reactivity: Human

Tested Applications: P-ELISA, WB, IHC

Host: Goat

Recommended dilutions: P-ELISA: 1/128000. Optimal dilutions/concentrations should be determined by the end user.

Conjugation: Unconjugated

Datasheet

Version: 3.0.0
Revision date: 24 Nov 2024



Immunogen:	abx615179 - Internal region: C-HVTDRSDARLQYG
Isotype:	IgG
Form:	Liquid
Purification:	Purified from goat serum by ammonium sulphate precipitation followed by antigen affinity chromatography using the immunizing peptide.
Storage:	Aliquot and store at -20°C. Avoid repeated freeze/thaw cycles.
Gene Symbol:	APH1A
GeneID:	51107
NCBI Accession:	NP_001071096.1, NP_057106.2
Buffer:	Tris saline, pH 7.3, containing 0.02% sodium azide and 0.5% bovine serum albumin.
Concentration:	0.5 mg/ml
Note:	This product is for research use only.

For Reference Only