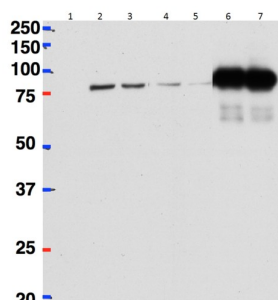
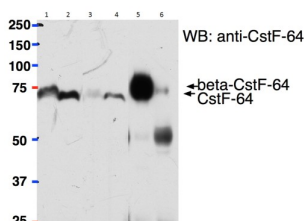


betaCstF-64 variant 1 Antibody

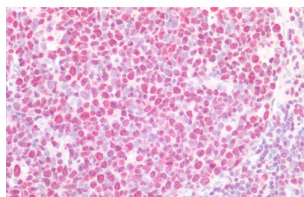
Catalogue No.: abx430971



HeLa lysate either in RIPA buffer (lanes 1, 2, 4, 6) or TX100 buffer (lanes 3, 5, 7) overexpressing Mouse β Cstf-64 (DYKDDDDK tagged) immunoprecipitated using abx430971 (2ug) with Protein G-coated magnetic beads in lanes 6 and 7 and probed with anti-DYKDDDDK (1/1000). Mock-transfected HeLa in Lane 1. A 1/40th part of the lysate was loaded in lanes 2 and 3 before IP and in lanes 4 and 5 after IP. Primary incubations were for 1 hour. Detected by chemiluminescence.



abx430971 (2ug) used to pull down β Cstf-64 from Mouse Brain (lane 5) lysate (500ug protein) while it cannot pull down Cstf-64 from Mouse Liver (lane 6) lysate (500ug protein) using Protein G-coated magnetic beads. A 1/40th part of the lysates were loaded in lanes 1 (Brain) and 2 (Liver) before IP and in lanes 3 (Brain) and 4 (Liver) after IP. Western blot probed with mouse anti- β Cstf-64/Cstf-64 antibody and detected by chemiluminescence.



abx430971 (5 μ g/ml) staining of paraffin embedded Human Tonsil. Steamed antigen retrieval with citrate buffer pH 6, AP-staining.

betaCstF-64 variant 1 Antibody is a Goat Polyclonal antibody against betaCstF-64 variant 1.

Target: betaCstF-64 variant 1

Clonality: Polyclonal

Reactivity: Human, Mouse

Tested Applications: P-ELISA, IHC, IP

Host: Goat

Recommended dilutions: P-ELISA: 1/128000. Optimal dilutions/concentrations should be determined by the end user.

Conjugation: Unconjugated

Datasheet

Version: 2.0.0
Revision date: 29 Apr 2025



Immunogen:	abx616952 - Internal region: C-PASIERVQGQRT
Isotype:	IgG
Form:	Liquid
Purification:	Purified from goat serum by ammonium sulphate precipitation followed by antigen affinity chromatography using the immunizing peptide.
Storage:	Aliquot and store at -20°C. Avoid repeated freeze/thaw cycles.
Gene Symbol:	CSTF2
GeneID:	108062
NCBI Accession:	ACF05702.1, ACF05700.1
Buffer:	Tris saline, pH 7.3, containing 0.02% sodium azide and 0.5% bovine serum albumin.
Concentration:	0.5 mg/ml
Note:	THIS PRODUCT IS FOR RESEARCH USE ONLY. NOT FOR USE IN DIAGNOSTIC, THERAPEUTIC OR COSMETIC PROCEDURES. NOT FOR HUMAN OR ANIMAL CONSUMPTION.