

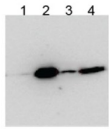
# Datasheet

Version: 7.0.0  
Revision date: 12 Dec 2024



## Protein Bicaudal C Homolog 1 (BICC1) Antibody

Catalogue No.: abx431933



1. native  
2. native, anti-FLAG  
3. SDS, EB09818  
4. SDS, anti-FLAG

HEK293 overexpressing Human BICC1 with N-terminal FLAG, probed with rabbit anti-BCC1 in Western Blot after IP using either abx431933 or anti-FLAG antibody in the presence or absence of SDS.

BICC1 Antibody is a Goat Polyclonal antibody against BICC1.

<b>Target:</b>	Protein Bicaudal C Homolog 1 (BICC1)
<b>Clonality:</b>	Polyclonal
<b>Reactivity:</b>	Human
<b>Tested Applications:</b>	P-ELISA, IP
<b>Host:</b>	Goat
<b>Recommended dilutions:</b>	P-ELISA: 1/8000. Optimal dilutions/concentrations should be determined by the end user.
<b>Conjugation:</b>	Unconjugated
<b>Immunogen:</b>	<a href="#">abx616138</a> - Internal region, 223-234 AA: C-PNPSIQHISQT
<b>Isotype:</b>	IgG
<b>Form:</b>	Liquid
<b>Purification:</b>	Purified from goat serum by ammonium sulphate precipitation followed by antigen affinity chromatography using the immunizing peptide.
<b>Storage:</b>	Aliquot and store at -20°C. Avoid repeated freeze/thaw cycles.
<b>Gene Symbol:</b>	BICC1
<b>GeneID:</b>	<a href="#">80114</a> <a href="#">361832</a>
<b>NCBI Accession:</b>	NP_001073981.1

# Datasheet

Version: 7.0.0

Revision date: 12 Dec 2024



**Buffer:** Tris saline, pH 7.3, containing 0.02% sodium azide and 0.5% bovine serum albumin.

**Concentration:** 0.5 mg/ml

**Note:** This product is for research use only.

For Reference Only