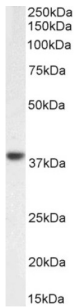
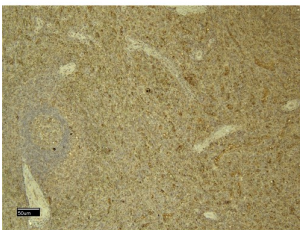


# C5a Anaphylatoxin Chemotactic Receptor 1 (C5AR1) Antibody

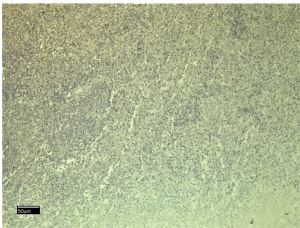
Catalogue No.: abx431060



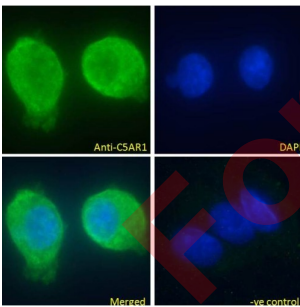
Western blot analysis of extract of HepG2 cell lysate (35 µg protein in RIPA buffer) using C5AR1 antibody (0.01 µg/ml).



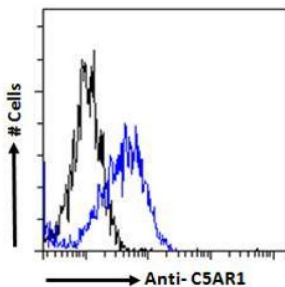
IHC-P analysis of paraffin embedded Human Spleen tissue using C5AR1 antibody (6 µg/ml).



Negative Control showing staining of paraffin embedded Human Spleen tissue, with no primary antibody.



Immunofluorescence analysis of paraformaldehyde fixed HepG2 cells, permeabilized with 0.15% Triton. Primary incubation 1hr (10 µg/ml) followed by AF488 secondary antibody (4 µg/ml), showing cytoplasmic staining. The nuclear stain is DAPI (blue). Negative control: Unimmunized goat IgG (10 µg/ml) followed by AF488 secondary antibody (4 µg/ml).



Flow cytometry analysis of paraformaldehyde fixed HepG2 cells (blue line), permeabilized with 0.5% Triton. Primary incubation 1hr (10 µg/ml) followed by AF488 secondary antibody (1 µg/ml). IgG control: Unimmunized goat IgG (black line) followed by AF488 secondary antibody.

# Datasheet

Version: 3.0.0  
Revision date: 02 Feb 2025



C5a Anaphylatoxin Chemotactic Receptor 1 (C5AR1) Antibody is a Goat Polyclonal antibody against C5a Anaphylatoxin Chemotactic Receptor 1 (C5AR1).

<b>Target:</b>	C5a Anaphylatoxin Chemotactic Receptor 1 (C5AR1)
<b>Clonality:</b>	Polyclonal
<b>Reactivity:</b>	Human
<b>Tested Applications:</b>	P-ELISA, WB, IHC, IF/ICC, FCM
<b>Host:</b>	Goat
<b>Recommended dilutions:</b>	P-ELISA: 1/64000, WB: 0.01-0.03 µg/ml, IHC: 6-8 µg/ml, IF/ICC: 10 µg/ml, FCM: 10 µg/ml. Optimal dilutions/concentrations should be determined by the end user.
<b>Conjugation:</b>	Unconjugated
<b>Immunogen:</b>	<a href="#">abx616231</a> - C-Terminus: C-RESKSFTRSTVDT
<b>Isotype:</b>	IgG
<b>Form:</b>	Liquid
<b>Purification:</b>	Purified from goat serum by ammonium sulphate precipitation followed by antigen affinity chromatography using the immunizing peptide.
<b>Storage:</b>	Aliquot and store at -20°C. Avoid repeated freeze/thaw cycles.
<b>Gene Symbol:</b>	C5AR1
<b>GeneID:</b>	<a href="#">728 113959</a>
<b>NCBI Accession:</b>	NP_001727.1
<b>Buffer:</b>	Tris saline, pH 7.3, containing 0.02% sodium azide and 0.5% bovine serum albumin.
<b>Concentration:</b>	0.5 mg/ml
<b>Note:</b>	This product is for research use only.