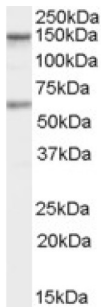


# Datasheet

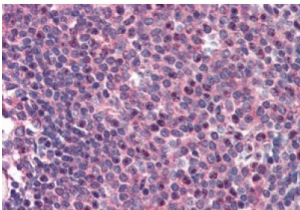
Version: 1.0.0  
Revision date: 27 Dec 2024

## Caspase Recruitment Domain Family Member 11 (CARD11) Antibody

Catalogue No.: abx431041



abx431041 staining (1 µg/ml) of Human Jurkat cells (RIPA buffer, 35 µg total protein per lane). Primary incubated for 1 hour. Detected by chemiluminescence.



abx431041 (2 µg/ml staining of paraffin embedded Human Spleen. Steamed antigen retrieval with citrate buffer pH 6, AP-staining.

CARD11 Antibody is a Goat Polyclonal antibody against CARD11.

**Target:** Caspase Recruitment Domain Family Member 11 (CARD11)

**Clonality:** Polyclonal

**Reactivity:** Human

**Tested Applications:** P-ELISA, WB, IHC

**Host:** Goat

**Recommended dilutions:** P-ELISA: 1/32000. Optimal dilutions/concentrations should be determined by the end user.

**Conjugation:** Unconjugated

**Immunogen:** [abx269317](#) - C-Terminus: C-QRKTIVWDEDQL

**Isotype:** IgG

**Form:** Liquid

**Purification:** Purified from goat serum by ammonium sulphate precipitation followed by antigen affinity chromatography using the immunizing peptide.

# Datasheet

Version: 1.0.0  
Revision date: 27 Dec 2024



**Storage:** Aliquot and store at -20°C. Avoid repeated freeze/thaw cycles.

**Gene Symbol:** CARD11

**GeneID:** [84433](#) [108723](#)

**NCBI Accession:** NP\_115791.3

**Buffer:** Tris saline, pH 7.3, containing 0.02% sodium azide and 0.5% bovine serum albumin.

**Concentration:** 0.5 mg/ml

**Note:** This product is for research use only.

For Reference Only