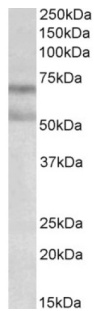


## Cannabinoid Receptor 1 (CB1) Antibody

Catalogue No.: abx431172



abx431172 (0.3 µg/ml) staining of Rat Brain lysate (35 µg protein in RIPA buffer). Primary incubation was 1 hour. Detected by chemiluminescence.

CB1 Antibody is a Goat Polyclonal antibody against CB1.

<b>Target:</b>	Cannabinoid Receptor 1 (CB1)
<b>Clonality:</b>	Polyclonal
<b>Reactivity:</b>	Rat
<b>Tested Applications:</b>	P-ELISA, WB
<b>Host:</b>	Goat
<b>Recommended dilutions:</b>	P-ELISA: 1/32000. Optimal dilutions/concentrations should be determined by the end user.
<b>Conjugation:</b>	Unconjugated
<b>Immunogen:</b>	<a href="#">abx616601</a> - Internal region (near N-Terminus), 44-58 AA: C-NITEFYNKSLSSFKE
<b>Isotype:</b>	IgG
<b>Form:</b>	Liquid
<b>Purification:</b>	Purified from goat serum by ammonium sulphate precipitation followed by antigen affinity chromatography using the immunizing peptide.
<b>Storage:</b>	Aliquot and store at -20°C. Avoid repeated freeze/thaw cycles.
<b>Gene Symbol:</b>	CNR1
<b>GeneID:</b>	<a href="#">1268</a> <a href="#">12801</a> <a href="#">25248</a>
<b>NCBI Accession:</b>	NP_057167.2, NP_149421.2

# Datasheet

Version: 2.0.0

Revision date: 22 Dec 2024



**Buffer:** Tris saline, pH 7.3, containing 0.02% sodium azide and 0.5% bovine serum albumin.

**Concentration:** 0.5 mg/ml

**Note:** This product is for research use only.

For Reference Only