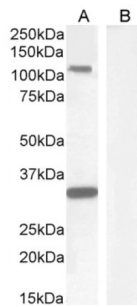
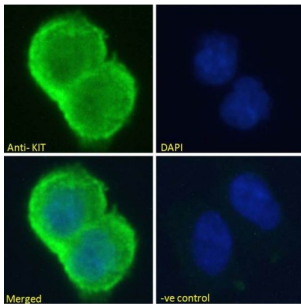


Mast/Stem Cell Growth Factor Receptor Kit (KIT) Antibody

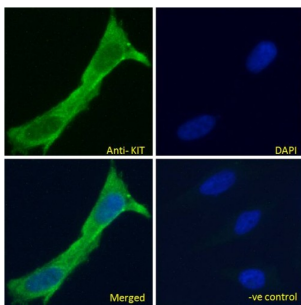
Catalogue No.: abx430032



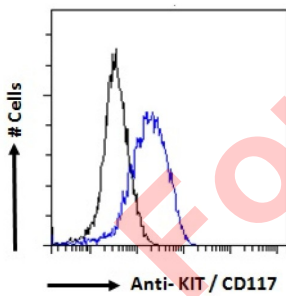
abx430032 (1 µg/ml) staining of Human Hippocampus lysate (A) + peptide (B) (35 µg protein in RIPA buffer). Detected by chemiluminescence.



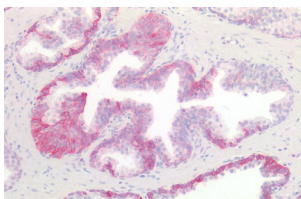
abx430032 Immunofluorescence analysis of paraformaldehyde fixed HEK293 cells, permeabilized with 0.15% Triton. Primary incubation 1hr (10 µg/ml) followed by AF488 secondary antibody (2 µg/ml), showing cytoplasmic/membrane staining. The nuclear stain is DAPI (blue). Negative control: Unimmunized goat IgG (10 µg/ml) followed by AF488 secondary antibody (2 µg/ml).



abx430032 Immunofluorescence analysis of paraformaldehyde fixed HeLa cells, permeabilized with 0.15% Triton. Primary incubation 1hr (10 µg/ml) followed by AF488 secondary antibody (2 µg/ml), showing cytoplasmic/membrane staining. The nuclear stain is DAPI (blue). Negative control: Unimmunized goat IgG (10 µg/ml) followed by AF488 secondary antibody (2 µg/ml).



Flow cytometry analysis of paraformaldehyde fixed MCF7 cells (blue line), permeabilized with 0.5% Triton. Primary incubation 1hr (10 µg/ml) followed by AF488 secondary antibody (1 µg/ml). IgG control: Unimmunized goat IgG (black line) followed by AF488 secondary antibody.



abx430032 (10 µg/ml) staining of paraffin embedded Human Prostate. Steamed antigen retrieval with citrate buffer pH 6, AP-staining.

Datasheet

Version: 2.0.0
Revision date: 27 Dec 2024



CD117 Antibody is a Goat Polyclonal antibody against CD117.

| | |
|-------------------------------|---------------------------------------------------------------------------------------------------------------------------------------|
| Target: | Mast/Stem Cell Growth Factor Receptor Kit (KIT) |
| Clonality: | Polyclonal |
| Reactivity: | Human |
| Tested Applications: | P-ELISA, WB, IHC, IF/ICC, FCM |
| Host: | Goat |
| Recommended dilutions: | P-ELISA: 1/128000. Optimal dilutions/concentrations should be determined by the end user. |
| Conjugation: | Unconjugated |
| Immunogen: | abx617078 - Internal region: KRDSFICSKQEDH |
| Isotype: | IgG |
| Form: | Liquid |
| Purification: | Purified from goat serum by ammonium sulphate precipitation followed by antigen affinity chromatography using the immunizing peptide. |
| Storage: | Aliquot and store at -20°C. Avoid repeated freeze/thaw cycles. |
| Gene Symbol: | KIT |
| GeneID: | 3815 |
| NCBI Accession: | NP_000213.1, NP_001087241.1 |
| Buffer: | Tris saline, pH 7.3, containing 0.02% sodium azide and 0.5% bovine serum albumin. |
| Concentration: | 0.5 mg/ml |
| Note: | This product is for research use only. |