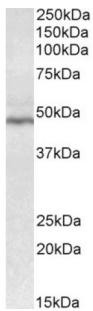
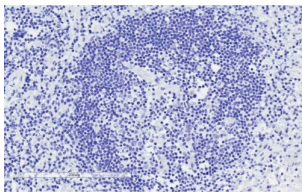


T-Cell-Specific Surface Glycoprotein CD28 (CD28) Antibody

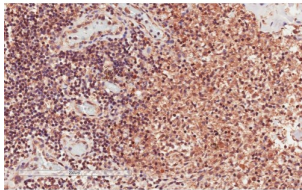
Catalogue No.: abx432468



abx432468 (0.3 µg/ml) staining of Human Tonsil lysate (35 µg protein in RIPA buffer).
Detected by chemiluminescence.



abx432468 Negative Control showing staining of paraffin embedded Human Lymph Node, with no primary antibody.



abx432468 (2 µg/ml) staining of paraffin embedded Human Lymph Node. Microwaved antigen retrieval with citrate buffer Ph 6, HRP-staining.

CD28 Antibody is a Goat Polyclonal antibody against CD28.

Target: T-Cell-Specific Surface Glycoprotein CD28 (CD28)

Clonality: Polyclonal

Reactivity: Human

Tested Applications: P-ELISA, WB, IHC

Host: Goat

Recommended dilutions: P-ELISA: 1/64000. Optimal dilutions/concentrations should be determined by the end user.

Conjugation: Unconjugated

Datasheet

Version: 1.0.0
Revision date: 10 Feb 2025



Immunogen:	abx616512 - Internal region: SSQLQVYSKTGFNCD
Isotype:	IgG
Form:	Liquid
Purification:	Purified from goat serum by ammonium sulphate precipitation followed by antigen affinity chromatography using the immunizing peptide.
Storage:	Aliquot and store at -20°C. Avoid repeated freeze/thaw cycles.
Gene Symbol:	CD28
GeneID:	940
NCBI Accession:	NP_006130.1
Buffer:	Tris saline, pH 7.3, containing 0.02% sodium azide and 0.5% bovine serum albumin.
Concentration:	0.5 mg/ml
Note:	This product is for research use only.

For Reference Only