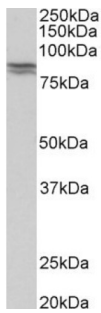
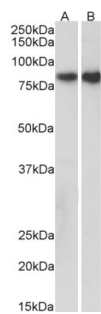


Cadherin-1 / E-Cadherin (CDH1) Antibody

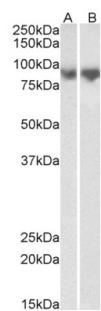
Catalogue No.: abx432231



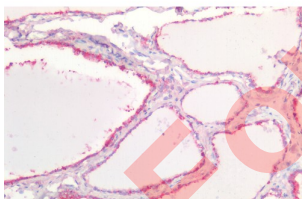
abx432231 (0.5 µg/ml) staining of Human Kidney lysate (35 µg protein in RIPA buffer). Detected by chemiluminescence.



abx432231 (0.3 µg/ml) staining of Pig Kidney (A) and Colon (B) lysates (35 µg protein in RIPA buffer). Detected by chemiluminescence.



abx432231 (0.3 µg/ml) staining of Mouse Lung (A) and Rat Lung (B) lysates (35 µg protein in RIPA buffer). Detected by chemiluminescence.



abx432231 (5 µg/ml) staining of paraffin embedded Human Thyroid. Steamed antigen retrieval with citrate buffer pH 6, AP-staining.

CDH1 Antibody is a Goat Polyclonal antibody against CDH1.

Target: Cadherin-1 / E-Cadherin (CDH1)

Clonality: Polyclonal

Reactivity: Human, Mouse, Rat, Pig

Datasheet

Version: 1.0.0
Revision date: 31 Jan 2025



Tested Applications: P-ELISA, WB, IHC

Host: Goat

Recommended dilutions: P-ELISA: 1/16000. Optimal dilutions/concentrations should be determined by the end user.

Conjugation: Unconjugated

Immunogen: [abx616704](#) - Internal region, 662-675 AA: C-DYKINLKLMDNQNK

Isotype: IgG

Form: Liquid

Purification: Purified from goat serum by ammonium sulphate precipitation followed by antigen affinity chromatography using the immunizing peptide.

Storage: Aliquot and store at -20°C. Avoid repeated freeze/thaw cycles.

Gene Symbol: CDH1

GeneID: [999 83502](#)

NCBI Accession: NP_004351.1

Buffer: Tris saline, pH 7.3, containing 0.02% sodium azide and 0.5% bovine serum albumin.

Concentration: 0.5 mg/ml

Note: This product is for research use only.

For Reference Only