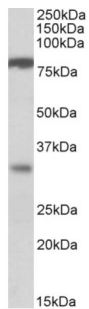


Chloride Channel Accessory 1 (CLCA1) Antibody

Catalogue No.: abx432512



abx432512 (1 µg/ml) staining of Human Duodenum lysate (35 µg protein in RIPA buffer). Primary incubation was 1 hour. Detected by chemiluminescence.

CLCA1 Antibody is a Goat Polyclonal antibody against CLCA1.

Target:	Chloride Channel Accessory 1 (CLCA1)
Clonality:	Polyclonal
Reactivity:	Human
Tested Applications:	P-ELISA, WB
Host:	Goat
Recommended dilutions:	P-ELISA: 1/16000. Optimal dilutions/concentrations should be determined by the end user.
Conjugation:	Unconjugated
Immunogen:	abx269696 - Internal region: C-TVTSKTNKDTSK
Isotype:	IgG
Form:	Liquid
Purification:	Purified from goat serum by ammonium sulphate precipitation followed by antigen affinity chromatography using the immunizing peptide.
Storage:	Aliquot and store at -20°C. Avoid repeated freeze/thaw cycles.
Gene Symbol:	CLCA1
GeneID:	1179
NCBI Accession:	NP_001276.1

Datasheet

Version: 2.0.0
Revision date: 23 Nov 2024



Buffer: Tris saline, pH 7.3, containing 0.02% sodium azide and 0.5% bovine serum albumin.

Concentration: 0.5 mg/ml

Note: This product is for research use only.

For Reference Only