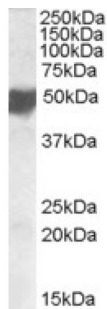


CXADR-Like Membrane Protein (CLMP) Antibody

Catalogue No.: abx432515



abx432515 staining (0.5 µg/ml) of Human Placenta lysate (RIPA buffer, 35 µg total protein per lane). Primary incubated for 1 hour. Detected by western blot using chemiluminescence.

CLMP Antibody is a Goat Polyclonal antibody against CLMP.

Target:	CXADR-Like Membrane Protein (CLMP)
Clonality:	Polyclonal
Reactivity:	Human
Tested Applications:	P-ELISA, WB
Host:	Goat
Recommended dilutions:	P-ELISA: 1/4000. Optimal dilutions/concentrations should be determined by the end user.
Conjugation:	Unconjugated
Immunogen:	abx615705 - C-Terminus: C-PSMIPSQSRAFQ
Isotype:	IgG
Form:	Liquid
Purification:	Purified from goat serum by ammonium sulphate precipitation followed by antigen affinity chromatography using the immunizing peptide.
Storage:	Aliquot and store at -20°C. Avoid repeated freeze/thaw cycles.
Gene Symbol:	CLMP
GeneID:	79827
NCBI Accession:	NP_079045.1

Datasheet

Version: 2.0.0

Revision date: 14 Jan 2025



Buffer: Tris saline, pH 7.3, containing 0.02% sodium azide and 0.5% bovine serum albumin.

Concentration: 0.5 mg/ml

Note: This product is for research use only.

For Reference Only