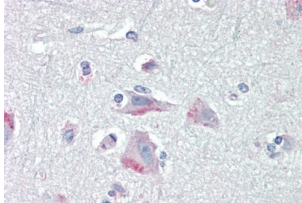
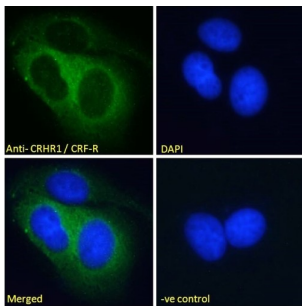


Corticotropin Releasing Hormone Receptor 1 (CRHR1) Antibody

Catalogue No.: abx430336



abx430336 (5 µg/ml staining of paraffin embedded Human Cortex. Steamed antigen retrieval with citrate buffer pH 6, AP-staining.



abx430336 Immunofluorescence analysis of paraformaldehyde fixed MCF7 cells, permeabilized with 0.15% Triton. Primary incubation 1hr (10 µg/ml) followed by AF488 secondary antibody (2 µg/ml), showing cytoplasmic and endosome staining. The nuclear stain is DAPI (blue). Negative control: Unimmunized goat IgG (10 µg/ml) followed by AF488 secondary antibody (2 µg/ml).

CRHR1 Antibody is a Goat Polyclonal antibody against CRHR1.

Target:	Corticotropin Releasing Hormone Receptor 1 (CRHR1)
Clonality:	Polyclonal
Reactivity:	Human, Mouse
Tested Applications:	P-ELISA, WB, IHC, IF/ICC
Host:	Goat
Recommended dilutions:	P-ELISA: 1/1000. Optimal dilutions/concentrations should be determined by the end user.
Conjugation:	Unconjugated
Immunogen:	abx615034 - Internal region, 250 - 263 AA: KLYYDNEKCWFGKR
Isotype:	IgG
Form:	Liquid
Purification:	Purified from goat serum by ammonium sulphate precipitation followed by antigen affinity chromatography using the immunizing peptide.

Datasheet

Version: 1.0.0

Revision date: 05 Dec 2024



Storage: Aliquot and store at -20°C. Avoid repeated freeze/thaw cycles.

Gene Symbol: CRHR1

GeneID: [1394](#) [12921](#) [58959](#)

NCBI Accession: NP_004373.2

Buffer: Tris saline, pH 7.3, containing 0.02% sodium azide and 0.5% bovine serum albumin.

Concentration: 0.5 mg/ml

Note: This product is for research use only.

For Reference Only