

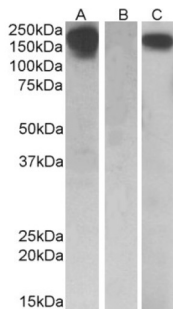
Datasheet

Version: 1.0.0
Revision date: 11 Feb 2025



Macrophage Colony-Stimulating Factor 1 Receptor (CSF1R) Antibody

Catalogue No.: abx431186



HEK293 lysate (10 µg protein in RIPA buffer) overexpressing Human CSF1R with C-terminal MYC tag probed with abx431186 (0.5 µg/ml) in Lane A and probed with anti-MYC Tag (1/1000) in lane C. Mock-transfected HEK293 probed with abx431186 (1mg/ml) in Lane B. Primary incubations were for 1 hour. Detected by chemiluminescence.

CSF1R Antibody is a Goat Polyclonal antibody against CSF1R.

Target:	Macrophage Colony-Stimulating Factor 1 Receptor (CSF1R)
Clonality:	Polyclonal
Reactivity:	Human
Tested Applications:	P-ELISA, WB
Host:	Goat
Recommended dilutions:	P-ELISA: 1/32000. Optimal dilutions/concentrations should be determined by the end user.
Conjugation:	Unconjugated
Immunogen:	abx616342 - Internal region, 700-710 AA: C-KNIHLEKKYVR
Isotype:	IgG
Form:	Liquid
Purification:	Purified from goat serum by ammonium sulphate precipitation followed by antigen affinity chromatography using the immunizing peptide.
Storage:	Aliquot and store at -20°C. Avoid repeated freeze/thaw cycles.
Gene Symbol:	CSF1R
GeneID:	1436 12978 307403
NCBI Accession:	NP_005202.2

Datasheet

Version: 1.0.0
Revision date: 11 Feb 2025



Buffer: Tris saline, pH 7.3, containing 0.02% sodium azide and 0.5% bovine serum albumin.

Concentration: 0.5 mg/ml

Note: This product is for research use only.

For Reference Only