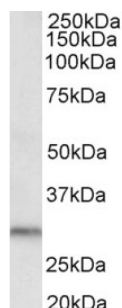


Dual Adaptor of Phosphotyrosine And 3-Phosphoinositides 1 (DAPP1) Antibody

Catalogue No.: abx432591



abx432591 (0.5 µg/ml) staining of Human Kidney lysate (35 µg protein in RIPA buffer). Primary incubation was 1 hour. Detected by chemiluminescence.

DAPP1 Antibody is a Goat Polyclonal antibody against DAPP1.

Target:	Dual Adaptor of Phosphotyrosine And 3-Phosphoinositides 1 (DAPP1)
Clonality:	Polyclonal
Reactivity:	Human
Tested Applications:	P-ELISA, WB
Host:	Goat
Recommended dilutions:	P-ELISA: 1/4000. Optimal dilutions/concentrations should be determined by the end user.
Conjugation:	Unconjugated
Immunogen:	abx269028 - C-Terminus: SALCISPEEKTDHK
Isotype:	IgG
Form:	Liquid
Purification:	Purified from goat serum by ammonium sulphate precipitation followed by antigen affinity chromatography using the immunizing peptide.
Storage:	Aliquot and store at -20°C. Avoid repeated freeze/thaw cycles.
Gene Symbol:	DAPP1
GeneID:	27071

Datasheet

Version: 2.0.0

Revision date: 27 Dec 2024



NCBI Accession:	AAF14578.1
Buffer:	Tris saline, pH 7.3, containing 0.02% sodium azide and 0.5% bovine serum albumin.
Concentration:	0.5 mg/ml
Note:	This product is for research use only.

For Reference Only