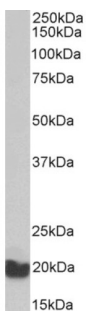


Eukaryotic Translation Elongation Factor 1 Epsilon 1 (EEF1E1) Antibody

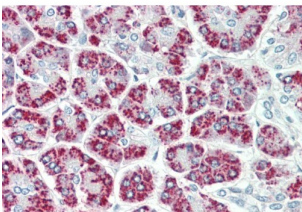
Catalogue No.: abx430716



abx430716 (0.1 µg/ml) staining of K562 lysate (35 µg protein in RIPA buffer). Detected by chemiluminescence.



abx430716 (0.3 µg/ml) staining of Pig Testis lysate (35 µg protein in RIPA buffer). Detected by chemiluminescence.



abx430716 (5 µg/ml) staining of paraffin embedded Human Pancreas. Steamed antigen retrieval with citrate buffer pH 6, AP-staining.

EEF1E1 Antibody is a Goat Polyclonal antibody against EEF1E1.

Target: Eukaryotic Translation Elongation Factor 1 Epsilon 1 (EEF1E1)

Clonality: Polyclonal

Reactivity: Human, Pig

Tested Applications: P-ELISA, WB, IHC

Host: Goat

Recommended dilutions: P-ELISA: 1/128000. Optimal dilutions/concentrations should be determined by the end user.

Datasheet

Version: 1.0.0
Revision date: 06 Oct 2024



Conjugation:	Unconjugated
Immunogen:	abx617095 - Internal region (near N-Terminus): C-SKGNKYSAQGERQ
Isotype:	IgG
Form:	Liquid
Purification:	Purified from goat serum by ammonium sulphate precipitation followed by antigen affinity chromatography using the immunizing peptide.
Storage:	Aliquot and store at -20°C. Avoid repeated freeze/thaw cycles.
UniProt Primary AC:	O43324 (UniProt , ExPASy)
Gene Symbol:	EEF1E1
GeneID:	9521
OMIM:	609206
NCBI Accession:	NP_004271.1, NP_001129122.1
HGNC:	3212
KEGG:	hsa:9521
Ensembl:	ENSG00000124802
String:	9606.ENSP00000369038
Buffer:	Tris saline, pH 7.3, containing 0.02% sodium azide and 0.5% bovine serum albumin.
Concentration:	0.5 mg/ml
Note:	This product is for research use only.