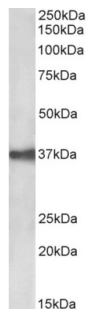


Epithelial Cell Adhesion Molecule (EPCAM) Antibody

Catalogue No.: abx430513



abx430513 (0.03 µg/ml) staining of CACO-2 lysate (35 µg protein in RIPA buffer). Primary incubation was 1 hour. Detected by chemiluminescence.

Epithelial Cell Adhesion Molecule (EPCAM) Antibody is a Goat Polyclonal antibody against Epithelial Cell Adhesion Molecule (EPCAM).

Target:	Epithelial Cell Adhesion Molecule (EPCAM)
Clonality:	Polyclonal
Reactivity:	Human
Tested Applications:	P-ELISA, WB
Host:	Goat
Recommended dilutions:	P-ELISA: 1/128000, WB: 0.03-0.10 µg/ml. Optimal dilutions/concentrations should be determined by the end user.
Conjugation:	Unconjugated
Immunogen:	abx617227 - Internal region, 167-179 AA: C-QKEITTRYQLDPK
Isotype:	IgG
Form:	Liquid
Purification:	Purified from goat serum by ammonium sulphate precipitation followed by antigen affinity chromatography using the immunizing peptide.
Storage:	Aliquot and store at -20°C. Avoid repeated freeze/thaw cycles.
Gene Symbol:	EPCAM
GeneID:	4072

Datasheet

Version: 3.0.0

Revision date: 02 Mar 2025



NCBI Accession: NP_002345.2

Buffer: Tris saline, pH 7.3, containing 0.02% sodium azide and 0.5% bovine serum albumin.

Concentration: 0.5 mg/ml

Note: THIS PRODUCT IS FOR RESEARCH USE ONLY. NOT FOR USE IN DIAGNOSTIC, THERAPEUTIC OR COSMETIC PROCEDURES. NOT FOR HUMAN OR ANIMAL CONSUMPTION.

For Reference Only