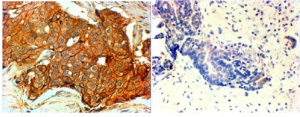


Receptor Tyrosine-Protein Kinase ErbB-2 (ERBB2) Antibody

Catalogue No.: abx430514



abx430514 (4 µg/ml staining of paraffin embedded Human breast cancer (Her+ left, triple negative right). Steamed antigen retrieval with citrate buffer pH 6, HRP-staining.

ERBB2 Antibody is a Goat Polyclonal antibody against ERBB2.

Target:	Receptor Tyrosine-Protein Kinase ErbB-2 (ERBB2)
Clonality:	Polyclonal
Reactivity:	Human
Tested Applications:	P-ELISA, IHC
Host:	Goat
Recommended dilutions:	P-ELISA: 1/128000. Optimal dilutions/concentrations should be determined by the end user.
Conjugation:	Unconjugated
Immunogen:	abx616911 - Internal region: PREYVNARHCLP
Isotype:	IgG
Form:	Liquid
Purification:	Purified from goat serum by ammonium sulphate precipitation followed by antigen affinity chromatography using the immunizing peptide.
Storage:	Aliquot and store at -20°C. Avoid repeated freeze/thaw cycles.
Gene Symbol:	ERBB2
GeneID:	2064
NCBI Accession:	NP_004439.2, NP_001005862.1

Datasheet

Version: 1.0.0

Revision date: 04 Dec 2024



Buffer: Tris saline, pH 7.3, containing 0.02% sodium azide and 0.5% bovine serum albumin.

Concentration: 0.5 mg/ml

Note: This product is for research use only.

For Reference Only