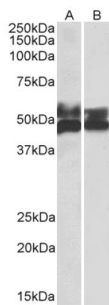


# Datasheet

Version: 2.0.0  
Revision date: 20 Sep 2024

## Fc Receptor-Like Protein 1 (FCRL1) Antibody

Catalogue No.: abx432683



abx432683 (0.5 µg/ml) staining of Human Tonsil (A) and Thymus (B) lysates (35 µg protein in RIPA buffer). Primary incubation was 1 hour. Detected by chemiluminescence.

FCRL1 Antibody is a Goat Polyclonal antibody against FCRL1.

<b>Target:</b>	Fc Receptor-Like Protein 1 (FCRL1)
<b>Clonality:</b>	Polyclonal
<b>Reactivity:</b>	Human
<b>Tested Applications:</b>	P-ELISA, WB
<b>Host:</b>	Goat
<b>Recommended dilutions:</b>	P-ELISA: 1/64000. Optimal dilutions/concentrations should be determined by the end user.
<b>Conjugation:</b>	Unconjugated
<b>Immunogen:</b>	<a href="#">abx617206</a> - C-Terminus: C-SRLRKANITDVD
<b>Isotype:</b>	IgG
<b>Form:</b>	Liquid
<b>Purification:</b>	Purified from goat serum by ammonium sulphate precipitation followed by antigen affinity chromatography using the immunizing peptide.
<b>Storage:</b>	Aliquot and store at -20°C. Avoid repeated freeze/thaw cycles.
<b>Gene Symbol:</b>	FCRL1
<b>GeneID:</b>	<a href="#">115350</a>
<b>NCBI Accession:</b>	NP_443170.1, NP_001152870.1

# Datasheet

Version: 2.0.0

Revision date: 20 Sep 2024



**Buffer:** Tris saline, pH 7.3, containing 0.02% sodium azide and 0.5% bovine serum albumin.

**Concentration:** 0.5 mg/ml

**Note:** This product is for research use only.

For Reference Only