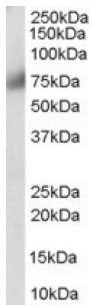
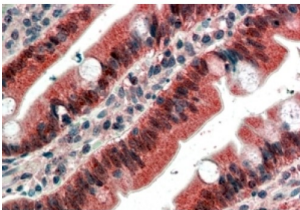


Fibroblast Growth Factor Receptor 1 (FGFR1) Antibody

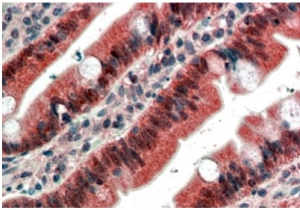
Catalogue No.: abx432689



abx432689 (0.3 µg/ml) staining of Human Breast lysate (35 µg protein in RIPA buffer). Primary incubation was 1 hour. Detected by chemiluminescence.



abx432689 (4 µg/ml) staining of paraffin embedded Human Kidney. Steamed antigen retrieval with citrate buffer pH 6, AP-staining.



abx432689 (4 µg/ml) staining of paraffin embedded Human Small Intestine. Steamed antigen retrieval with citrate buffer pH 6, AP-staining.

FGFR1 Antibody is a Goat Polyclonal antibody against FGFR1.

Target: Fibroblast Growth Factor Receptor 1 (FGFR1)

Clonality: Polyclonal

Reactivity: Human

Tested Applications: P-ELISA, WB, IHC

Host: Goat

Recommended dilutions: P-ELISA: 1/32000. Optimal dilutions/concentrations should be determined by the end user.

Conjugation: Unconjugated

Datasheet

Version: 1.0.0
Revision date: 09 Nov 2024



| | |
|------------------------|---|
| Immunogen: | abx269628 - C-Terminus: CLPRHPAQLANGGLKR |
| Isotype: | IgG |
| Form: | Liquid |
| Purification: | Purified from goat serum by ammonium sulphate precipitation followed by antigen affinity chromatography using the immunizing peptide. |
| Storage: | Aliquot and store at -20°C. Avoid repeated freeze/thaw cycles. |
| Gene Symbol: | FGFR1 |
| GeneID: | 2260 |
| NCBI Accession: | NP_075598.2, NP_056934.2, NP_075593.1, NP_075594.1, NP_075599.1 |
| Buffer: | Tris saline, pH 7.3, containing 0.02% sodium azide and 0.5% bovine serum albumin. |
| Concentration: | 0.5 mg/ml |
| Note: | This product is for research use only. |

For Reference Only