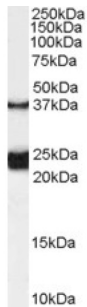


## Galanin Receptor Type 1 (GALR1) Antibody

Catalogue No.: abx431277



abx431277 (0.1 µg/ml) staining of Rat Spinal Cord lysate (35 µg protein in RIPA buffer). Primary incubation was 1 hour. Detected by chemiluminescence.

GALR1 Antibody is a Goat Polyclonal antibody against GALR1.

<b>Target:</b>	Galanin Receptor Type 1 (GALR1)
<b>Clonality:</b>	Polyclonal
<b>Reactivity:</b>	Rat
<b>Tested Applications:</b>	P-ELISA, WB
<b>Host:</b>	Goat
<b>Recommended dilutions:</b>	P-ELISA: 1/128000. Optimal dilutions/concentrations should be determined by the end user.
<b>Conjugation:</b>	Unconjugated
<b>Immunogen:</b>	<a href="#">abx615038</a> - Internal region: C-RSKPGKPRSTTN
<b>Isotype:</b>	IgG
<b>Form:</b>	Liquid
<b>Purification:</b>	Purified from goat serum by ammonium sulphate precipitation followed by antigen affinity chromatography using the immunizing peptide.
<b>Storage:</b>	Aliquot and store at -20°C. Avoid repeated freeze/thaw cycles.
<b>UniProt Primary AC:</b>	P47211 ( <a href="#">UniProt</a> , <a href="#">ExPASy</a> )
<b>Gene Symbol:</b>	GALR1
<b>GeneID:</b>	<a href="#">2587</a>

# Datasheet

Version: 2.0.0

Revision date: 01 Feb 2025



**NCBI Accession:** NP\_001471.2

**KEGG:** hsa:2587

**String:** [9606.ENSP00000299727](#)

**Buffer:** Tris saline, pH 7.3, containing 0.02% sodium azide and 0.5% bovine serum albumin.

**Concentration:** 0.5 mg/ml

**Note:** This product is for research use only.

For Reference Only