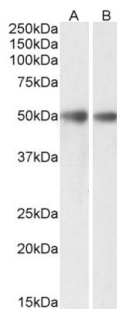


Glycerophosphodiester Phosphodiesterase 1 (GDE1) Antibody

Catalogue No.: abx430140



abx430140 (0.3 µg/ml) staining of Mouse (A) and Rat (B) Brain lysates (35 µg protein in RIPA buffer). Primary incubation was 1 hour. Detected by chemiluminescence.

GDE1 Antibody is a Goat Polyclonal antibody against GDE1.

Target:	Glycerophosphodiester Phosphodiesterase 1 (GDE1)
Clonality:	Polyclonal
Reactivity:	Mouse, Rat
Tested Applications:	P-ELISA, WB
Host:	Goat
Recommended dilutions:	P-ELISA: 1/128000. Optimal dilutions/concentrations should be determined by the end user.
Conjugation:	Unconjugated
Immunogen:	abx617315 - Internal region, 230-242 AA: C-SLSHTGDGKPRYD
Isotype:	IgG
Form:	Liquid
Purification:	Purified from goat serum by ammonium sulphate precipitation followed by antigen affinity chromatography using the immunizing peptide.
Storage:	Aliquot and store at -20°C. Avoid repeated freeze/thaw cycles.
Gene Symbol:	GDE1
GeneID:	51573 56209 60418
NCBI Accession:	NP_057725.1

Datasheet

Version: 2.0.0
Revision date: 24 Nov 2024



Buffer: Tris saline, pH 7.3, containing 0.02% sodium azide and 0.5% bovine serum albumin.

Concentration: 0.5 mg/ml

Note: This product is for research use only.

For Reference Only