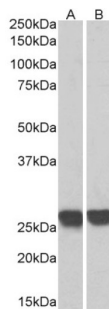


## Growth Factor Receptor Bound Protein 2 (GRB2) Antibody (Biotin)

Catalogue No.: abx431306



Biotinylated abx431305 (0.3 µg/ml) staining of MOLT4 (A) and Human Thymus (B) lysates (35 µg protein in RIPA buffer), exactly mirroring its parental non-biotinylated product. Primary incubation was 1 hour. Detected by chemiluminescence, using streptavidin-HRP and using NAP blocker as a substitute for skimmed milk.

GRB2 Antibody is a Goat Polyclonal antibody against GRB2.

<b>Target:</b>	Growth Factor Receptor Bound Protein 2 (GRB2)
<b>Clonality:</b>	Polyclonal
<b>Reactivity:</b>	Human, Mouse, Rat, Pig
<b>Tested Applications:</b>	P-ELISA, WB
<b>Host:</b>	Goat
<b>Recommended dilutions:</b>	P-ELISA: 1/32000. Optimal dilutions/concentrations should be determined by the end user.
<b>Conjugation:</b>	Biotin
<b>Immunogen:</b>	C-Terminus: C-PRNYVTPVNRNV
<b>Isotype:</b>	IgG
<b>Form:</b>	Liquid
<b>Purification:</b>	Purified from goat serum by ammonium sulphate precipitation followed by antigen affinity chromatography using the immunizing peptide.
<b>Storage:</b>	Aliquot and store at -20°C. Avoid repeated freeze/thaw cycles.
<b>Gene Symbol:</b>	GRB2
<b>GeneID:</b>	<a href="#">2885</a> <a href="#">14784</a> <a href="#">81504</a>
<b>NCBI Accession:</b>	NP_002077.1, NP_987102.1

# Datasheet

Version: 2.0.0

Revision date: 06 Oct 2024



**Buffer:** Tris saline, pH 7.3, containing 0.02% sodium azide and 0.5% bovine serum albumin.

**Concentration:** 0.5 mg/ml

**Note:** This product is for research use only.

For Reference Only