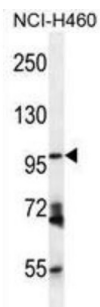
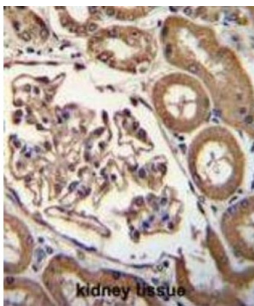
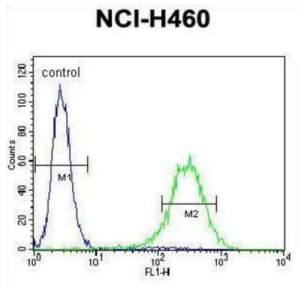


# Glutamyl Aminopeptidase (Aminopeptidase A) (ENPEP) Antibody

Catalogue No.: abx026596



ENPEP appears to have a role in the catabolic pathway of the renin-angiotensin system. Probably plays a role in regulating growth and differentiation of early B-lineage cells.

**Target:** ENPEP

**Clonality:** Polyclonal

**Reactivity:** Human

**Tested Applications:** ELISA, WB, IHC, FCM

**Host:** Rabbit

**Recommended dilutions:** WB: 1/1000, IHC-P: 1/50 - 1/100, FCM: 1/10 - 1/50. Not tested in IHC-F. Optimal dilutions/concentrations should be determined by the end user.

# Datasheet

Version: 2.0.0  
Revision date: 04 Dec 2024



<b>Conjugation:</b>	Unconjugated
<b>Immunogen:</b>	KLH-conjugated synthetic peptide between 899-930 amino acids from the C-terminal region of human ENPEP.
<b>Isotype:</b>	IgG
<b>Form:</b>	Liquid
<b>Purification:</b>	Purified through a protein A column, followed by peptide affinity purification.
<b>Storage:</b>	Aliquot and store at -20°C. Avoid repeated freeze/thaw cycles.
<b>UniProt Primary AC:</b>	Q07075 ( <a href="#">UniProt</a> , <a href="#">ExPASy</a> )
<b>KEGG:</b>	hsa:2028
<b>String:</b>	<a href="#">9606.ENSP00000265162</a>
<b>Molecular Weight:</b>	Calculated MW: 109 kDa
<b>Buffer:</b>	PBS containing 0.09% sodium azide.
<b>Note:</b>	This product is for research use only.

For Reference Only