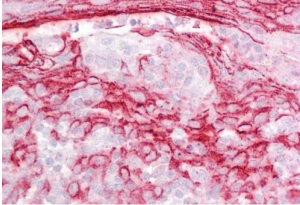
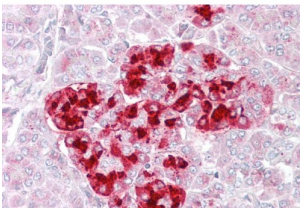


Insulin Like Growth Factor Binding Protein 7 (IGFBP7) Antibody

Catalogue No.: abx432850



abx432850 (2.5 µg/ml) staining of paraffin embedded Human Tonsil. Steamed antigen retrieval with citrate buffer pH 6, AP-staining.



abx432850 (2.5 µg/ml) staining of paraffin embedded Human Pancreas. Steamed antigen retrieval with citrate buffer pH 6, AP-staining.

IGFBP7 Antibody is a Goat Polyclonal antibody against IGFBP7.

Target:	Insulin Like Growth Factor Binding Protein 7 (IGFBP7)
Clonality:	Polyclonal
Reactivity:	Human
Tested Applications:	P-ELISA, IHC
Host:	Goat
Recommended dilutions:	P-ELISA: 1/16000. Optimal dilutions/concentrations should be determined by the end user.
Conjugation:	Unconjugated
Immunogen:	abx615525 - Internal region, 194-207 AA: C-NKVKRGHYGVQRTE
Isotype:	IgG
Form:	Liquid
Purification:	Purified from goat serum by ammonium sulphate precipitation followed by antigen affinity chromatography using the immunizing peptide.

Datasheet

Version: 1.0.0
Revision date: 31 Jan 2025



Storage:	Aliquot and store at -20°C. Avoid repeated freeze/thaw cycles.
Gene Symbol:	IGFBP7
GeneID:	3490
NCBI Accession:	NP_001544.1
Buffer:	Tris saline, pH 7.3, containing 0.02% sodium azide and 0.5% bovine serum albumin.
Concentration:	0.5 mg/ml
Note:	This product is for research use only.

For Reference Only