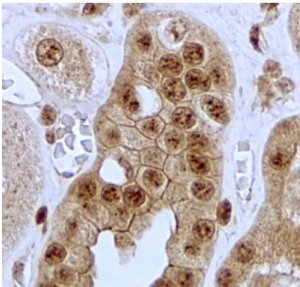
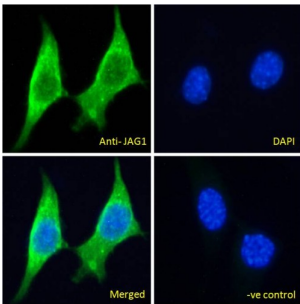


Protein Jagged-1 (JAG1) Antibody

Catalogue No.: abx431368



abx431368 (2 µg/ml staining of paraffin embedded Human Kidney. Steamed antigen retrieval with citrate buffer pH 6, HRP-staining.



abx431368 Immunofluorescence analysis of paraformaldehyde fixed NIH3T3 cells, permeabilized with 0.15% Triton. Primary incubation 1hr (5 µg/ml) followed by AF488 secondary antibody (2 µg/ml), showing cytoplasmic staining. The nuclear stain is DAPI (blue). Negative control: Unimmunized goat IgG (5 µg/ml) followed by AF488 secondary antibody (2 µg/ml).

JAG1 Antibody is a Goat Polyclonal antibody against JAG1.

Target: Protein Jagged-1 (JAG1)

Clonality: Polyclonal

Reactivity: Human, Mouse

Tested Applications: P-ELISA, IHC, IF/ICC

Host: Goat

Recommended dilutions: P-ELISA: 1/8000. Optimal dilutions/concentrations should be determined by the end user.

Conjugation: Unconjugated

Immunogen: [abx616600](#) - C-Terminus: C-TNKQDNRDLESAQS

Isotype: IgG

Form: Liquid

Purification: Purified from goat serum by ammonium sulphate precipitation followed by antigen affinity chromatography using the immunizing peptide.

Datasheet

Version: 3.0.0
Revision date: 28 Nov 2024



Storage: Aliquot and store at -20°C. Avoid repeated freeze/thaw cycles.

Gene Symbol: JAG1

GeneID: [182 16449 29146](#)

NCBI Accession: NP_000205.1

Buffer: Tris saline, pH 7.3, containing 0.02% sodium azide and 0.5% bovine serum albumin.

Concentration: 0.5 mg/ml

Note: This product is for research use only.

For Reference Only