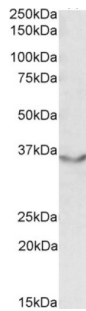


Junctional Adhesion Molecule 2 (JAM2) Antibody

Catalogue No.: abx430155



abx430155 (0.5 µg/ml) staining of Human Heart lysate (35 µg protein in RIPA buffer) with (B) and without (A) blocking with the immunising peptide. Primary incubation was 1 hour. Detected by chemiluminescence.

JAM2 Antibody is a Goat Polyclonal antibody against JAM2.

Target:	Junctional Adhesion Molecule 2 (JAM2)
Clonality:	Polyclonal
Reactivity:	Human
Tested Applications:	P-ELISA, WB
Host:	Goat
Recommended dilutions:	P-ELISA: 1/4000. Optimal dilutions/concentrations should be determined by the end user.
Conjugation:	Unconjugated
Immunogen:	abx615968 - Internal region: C-QRKGYFSKETSFQ
Isotype:	IgG
Form:	Liquid
Purification:	Purified from goat serum by ammonium sulphate precipitation followed by antigen affinity chromatography using the immunizing peptide.
Storage:	Aliquot and store at -20°C. Avoid repeated freeze/thaw cycles.
Gene Symbol:	JAM2
GeneID:	58494 67374 619374
NCBI Accession:	NP_067042.1

Datasheet

Version: 3.0.0

Revision date: 05 Jan 2025



Buffer: Tris saline, pH 7.3, containing 0.02% sodium azide and 0.5% bovine serum albumin.

Concentration: 0.5 mg/ml

Note: This product is for research use only.

For Reference Only