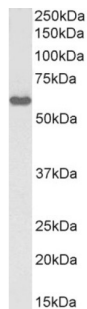


## Karyopherin Alpha 3 (KPNA3) Antibody (Biotin)

Catalogue No.: abx430369



Western blot analysis of Rat Testis lysate (35 µg protein in RIPA buffer), using biotin-conjugated Karyopherin Alpha 3 (KPNA3) Antibody (1 µg/ml). Detected by chemiluminescence, using streptavidin-HRP and using NAP blocker as a substitute for skimmed milk.

KPNA3 Antibody is a Goat Polyclonal antibody against KPNA3 ([abx430368](#)) conjugated to Biotin.

<b>Target:</b>	Karyopherin Alpha 3 (KPNA3)
<b>Clonality:</b>	Polyclonal
<b>Reactivity:</b>	Human, Mouse, Rat
<b>Tested Applications:</b>	P-ELISA, WB
<b>Host:</b>	Goat
<b>Recommended dilutions:</b>	P-ELISA: 1/32000. Optimal dilutions/concentrations should be determined by the end user.
<b>Conjugation:</b>	Biotin
<b>Immunogen:</b>	C-Terminus: CDPTANLQTKEFNF
<b>Isotype:</b>	IgG
<b>Form:</b>	Liquid
<b>Purification:</b>	Purified from goat serum by ammonium sulphate precipitation followed by antigen affinity chromatography using the immunizing peptide.
<b>Storage:</b>	Aliquot and store at -20°C. Avoid repeated freeze/thaw cycles.
<b>Gene Symbol:</b>	KPNA3
<b>GeneID:</b>	<a href="#">3839</a> <a href="#">16648</a> <a href="#">361055</a>
<b>NCBI Accession:</b>	NP_002258.2

# Datasheet

Version: 2.0.0

Revision date: 21 Dec 2024



**Buffer:** Tris saline, pH 7.3, containing 0.02% sodium azide and 0.5% bovine serum albumin.

**Concentration:** 0.5 mg/ml

**Note:** This product is for research use only.

For Reference Only