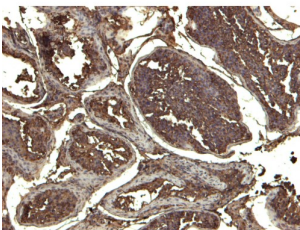


Karyopherin Alpha 3 (KPNA3) Antibody

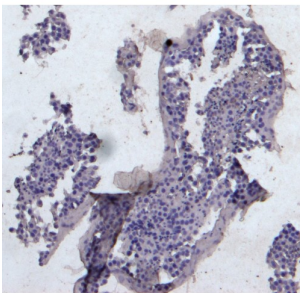
Catalogue No.: abx430368



Western blot analysis of extract of HeLa lysate (35 µg protein in RIPA buffer) using KPNA3 antibody (0.1 µg/ml).



IHC-P analysis of paraffin embedded Human Testis tissue using KPNA3 antibody (5 µg/ml).



Negative control showing staining of paraffin embedded Human Testis tissue, with no primary antibody.

KPNA3 Antibody is a Goat Polyclonal antibody against KPNA3.

This antibody is available conjugated to biotin ([abx430369](#)).

Target: Karyopherin Alpha 3 (KPNA3)

Clonality: Polyclonal

Reactivity: Human

Tested Applications: P-ELISA, WB, IHC

Host: Goat

Recommended dilutions: P-ELISA: 1/128000, WB: 0.1-0.3 µg/ml, IHC: 6 µg/ml. Optimal dilutions/concentrations should be determined by the end user.

Datasheet

Version: 1.0.0
Revision date: 30 Dec 2024



Conjugation:	Unconjugated
Immunogen:	abx269468 - C-Terminus: C-DPTANLQTKEFNF
Isotype:	IgG
Form:	Liquid
Purification:	Purified from goat serum by ammonium sulphate precipitation followed by antigen affinity chromatography using the immunizing peptide.
Storage:	Aliquot and store at -20°C. Avoid repeated freeze/thaw cycles.
Gene Symbol:	KPNA3
GeneID:	3839 16648
NCBI Accession:	NP_002258.2
Buffer:	Tris saline, pH 7.3, containing 0.02% sodium azide and 0.5% bovine serum albumin.
Concentration:	0.5 mg/ml
Note:	This product is for research use only.

For Reference Only