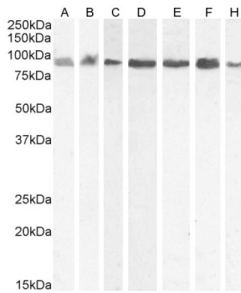
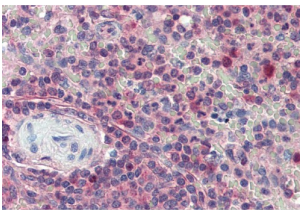


## Importin Subunit Beta-1 (KPNB1) Antibody

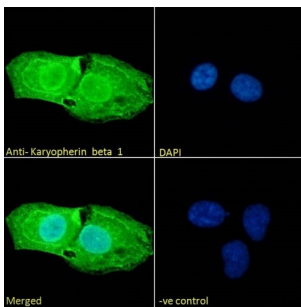
Catalogue No.: abx431357



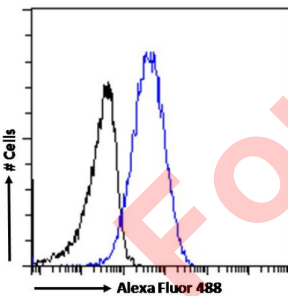
abx431357 (0.03 µg/ml) staining of A431 (A), HEK293 (B), Jurkat (C), (0.01 µg/ml) Daudi (D), HeLa (E) and (0.1 µg/ml) Kelly (F) and KNRK (G) cell lysate (35 µg protein in RIPA buffer). Detected by chemiluminescence..



abx431357 (5 µg/ml) staining of paraffin embedded Human Spleen. Steamed antigen retrieval with citrate buffer pH 6, AP-staining.



Immunofluorescence analysis of paraformaldehyde fixed U2OS cells, permeabilized with 0.15% Triton. Primary incubation 1hr (10 µg/ml) followed by AF488 secondary antibody (2 µg/ml), showing nuclear membrane, nuclear and cytoplasmic staining. The nuclear stain is DAPI (blue). Negative control: Unimmunized goat IgG (10 µg/ml) followed by AF488 secondary antibody (2 µg/ml).



Flow cytometry analysis of paraformaldehyde fixed A431 cells (blue line), permeabilized with 0.5% Triton. Primary incubation 1hr (10 µg/ml) followed by AF488 secondary antibody (1 µg/ml). IgG control: Unimmunized goat IgG (black line) followed by AF488 secondary antibody.

Importin Subunit Beta-1 (KPNB1) Antibody is a polyclonal antibody against Importin Subunit Beta-1.

**Target:** Importin Subunit Beta-1 (KPNB1)

**Clonality:** Polyclonal

**Reactivity:** Human, Rat

# Datasheet

Version: 2.0.0  
Revision date: 23 Feb 2025



|                               |   |
|-------------------------------|---|
| <b>Tested Applications:</b>   | P-ELISA, WB, IHC, IF/ICC, FCM   |
| <b>Host:</b>                  | Goat  |
| <b>Recommended dilutions:</b> | P-ELISA: 1/32000. Optimal dilutions/concentrations should be determined by the end user.  |
| <b>Conjugation:</b>           | Unconjugated  |
| <b>Immunogen:</b>             | <a href="#">abx269798</a> - C-Terminus: C-RRSKTNKAKTLAT   |
| <b>Isotype:</b>               | IgG   |
| <b>Form:</b>                  | Liquid  |
| <b>Purification:</b>          | Purified from goat serum by ammonium sulphate precipitation followed by antigen affinity chromatography using the immunizing peptide. |
| <b>Storage:</b>               | Aliquot and store at -20°C. Avoid repeated freeze/thaw cycles.  |
| <b>Gene Symbol:</b>           | KPNB1   |
| <b>GeneID:</b>                | <a href="#">3837</a> <a href="#">16211</a> <a href="#">24917</a>  |
| <b>NCBI Accession:</b>        | NP_002256.2, NP_001263382.1   |
| <b>Buffer:</b>                | Tris saline, pH 7.3, containing 0.02% sodium azide and 0.5% bovine serum albumin.   |
| <b>Concentration:</b>         | 0.5 mg/ml   |
| <b>Note:</b>                  | This product is for research use only.  |

For Reference Only