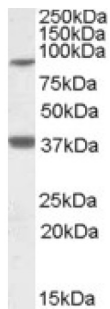


## Longevity Assurance Gene 1 Protein Homolog 1 (LASS1) Antibody

Catalogue No.: abx432242



abx432242 (1 µg/ml) staining of Frontal Cortex lysate (35 µg protein in RIPA buffer). Primary incubation was 1 hour. Detected by chemiluminescence.

LASS1 Antibody is a Goat Polyclonal antibody against LASS1.

<b>Target:</b>	Longevity Assurance Gene 1 Protein Homolog 1 (LASS1)
<b>Clonality:</b>	Polyclonal
<b>Reactivity:</b>	Human
<b>Tested Applications:</b>	P-ELISA, WB
<b>Host:</b>	Goat
<b>Recommended dilutions:</b>	P-ELISA: 1/64000. Optimal dilutions/concentrations should be determined by the end user.
<b>Conjugation:</b>	Unconjugated
<b>Immunogen:</b>	<a href="#">abx615653</a> - Internal region: C-KDLREYDTAEAQ
<b>Isotype:</b>	IgG
<b>Form:</b>	Liquid
<b>Purification:</b>	Purified from goat serum by ammonium sulphate precipitation followed by antigen affinity chromatography using the immunizing peptide.
<b>Storage:</b>	Aliquot and store at -20°C. Avoid repeated freeze/thaw cycles.
<b>Gene Symbol:</b>	CERS1
<b>GeneID:</b>	<a href="#">10715</a> <a href="#">93898</a> <a href="#">306351</a>
<b>NCBI Accession:</b>	NP_067090.1, NP_937850.1

# Datasheet

Version: 2.0.0

Revision date: 01 Apr 2025



**Buffer:** Tris saline, pH 7.3, containing 0.02% sodium azide and 0.5% bovine serum albumin.

**Concentration:** 0.5 mg/ml

**Note:** THIS PRODUCT IS FOR RESEARCH USE ONLY. NOT FOR USE IN DIAGNOSTIC, THERAPEUTIC OR COSMETIC PROCEDURES. NOT FOR HUMAN OR ANIMAL CONSUMPTION.

For Reference Only