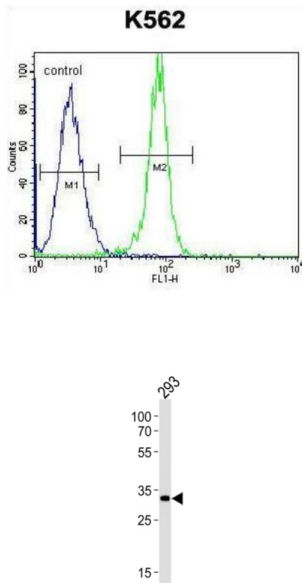


STIP1 Homology And U-Box Containing Protein 1 (STUB1) Antibody

Catalogue No.: abx026635



STUB1, or CHIP, is a ubiquitin ligase/cochaperone that participates in protein quality control by targeting a broad range of chaperone protein substrates for degradation (Min et al., 2008 [PubMed 18411298]).

Target: STIP1 Homology And U-Box Containing Protein 1 (STUB1)

Clonality: Polyclonal

Reactivity: Human

Tested Applications: ELISA, WB, FCM

Host: Rabbit

Recommended dilutions: WB: 1/1000, FCM: 1/10 - 1/50. Optimal dilutions/concentrations should be determined by the end user.

Conjugation: Unconjugated

Immunogen: KLH-conjugated synthetic peptide between 236-263 amino acids from the C-terminal region of human STUB1.

Isotype: IgG

Form: Liquid

Datasheet

Version: 2.0.0
Revision date: 18 Jan 2025



Purification:	Purified through a protein A column, followed by peptide affinity purification.
Storage:	Aliquot and store at -20°C. Avoid repeated freeze/thaw cycles.
UniProt Primary AC:	Q9UNE7 (UniProt , ExPASy)
Gene Symbol:	STUB1
NCBI Accession:	NP_005852.2
String:	9606.ENSP00000219548
Molecular Weight:	Calculated MW: 34.9 kDa
Buffer:	PBS containing 0.09% sodium azide.
Specificity:	Predicted to react with Mouse and Chicken STUB1.
Note:	This product is for research use only.

For Reference Only