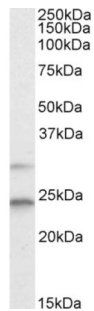


Mitotic Arrest Deficient 2 Like 1 (MAD2L1) Antibody

Catalogue No.: abx431997



abx431997 (2 µg/ml) staining of HEK293 lysate (35 µg protein in RIPA buffer). Primary incubation was 1 hour. Detected by chemiluminescence.

MAD2L1 Antibody is a Goat Polyclonal antibody against MAD2L1.

Target:	Mitotic Arrest Deficient 2 Like 1 (MAD2L1)
Clonality:	Polyclonal
Reactivity:	Human
Tested Applications:	P-ELISA, WB
Host:	Goat
Recommended dilutions:	P-ELISA: 1/32000. Optimal dilutions/concentrations should be determined by the end user.
Conjugation:	Unconjugated
Immunogen:	abx269228 - C-Terminus: C-KVNSMVAYKIPVND
Isotype:	IgG
Form:	Liquid
Purification:	Purified from goat serum by ammonium sulphate precipitation followed by antigen affinity chromatography using the immunizing peptide.
Storage:	Aliquot and store at -20°C. Avoid repeated freeze/thaw cycles.
Gene Symbol:	MAD2L1
GeneID:	4085 56150
NCBI Accession:	NP_002349.1

Datasheet

Version: 2.0.0
Revision date: 13 Mar 2025



Buffer: Tris saline, pH 7.3, containing 0.02% sodium azide and 0.5% bovine serum albumin.

Concentration: 0.5 mg/ml

Note: THIS PRODUCT IS FOR RESEARCH USE ONLY. NOT FOR USE IN DIAGNOSTIC, THERAPEUTIC OR COSMETIC PROCEDURES. NOT FOR HUMAN OR ANIMAL CONSUMPTION.

For Reference Only