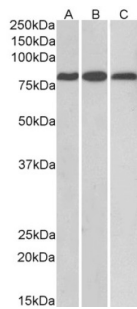
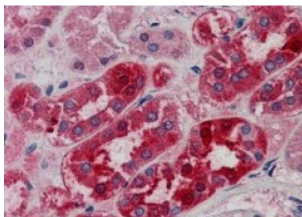


Probable E3 Ubiquitin-Protein Ligase MID2 (MID2) Antibody

Catalogue No.: abx430120



abx430120 (0.1 µg/ml) staining of Mouse (A) and Rat (B) Heart, and Rat Kidney (C) lysates (35 µg protein in RIPA buffer). Primary incubation was 1 hour. Detected by chemiluminescence.



abx430120 (5 µg/ml) staining of paraffin embedded Human Kidney. Steamed antigen retrieval with citrate buffer pH 6, AP-staining.

MID2 Antibody is a Goat Polyclonal antibody against MID2.

Target: Probable E3 Ubiquitin-Protein Ligase MID2 (MID2)

Clonality: Polyclonal

Reactivity: Human, Mouse, Rat

Tested Applications: P-ELISA, WB, IHC

Host: Goat

Recommended dilutions: P-ELISA: 1/32000. Optimal dilutions/concentrations should be determined by the end user.

Conjugation: Unconjugated

Immunogen: [abx269293](#) - C-Terminus: QESPYVSGMKTCH

Isotype: IgG

Form: Liquid

Purification: Purified from goat serum by ammonium sulphate precipitation followed by antigen affinity chromatography using the immunizing peptide.

Datasheet

Version: 2.0.0

Revision date: 25 Dec 2024



Storage: Aliquot and store at -20°C. Avoid repeated freeze/thaw cycles.

Gene Symbol: MID2

GeneID: [11043](#) [23947](#)

NCBI Accession: NP_036348.2, NP_438112.2

Buffer: Tris saline, pH 7.3, containing 0.02% sodium azide and 0.5% bovine serum albumin.

Concentration: 0.5 mg/ml

Note: This product is for research use only.

For Reference Only