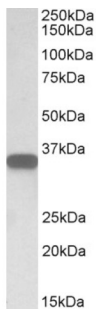
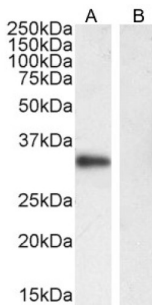


B-Lymphocyte Antigen CD20 (MS4A1) Antibody

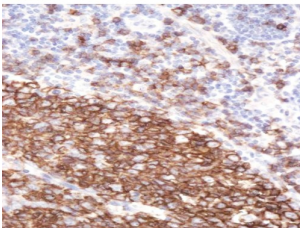
Catalogue No.: abx430201



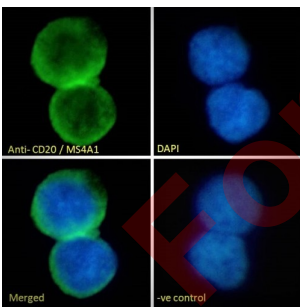
abx430201 (0.05 µg/ml) staining of Human Lymph Node lysate (35 µg protein in RIPA buffer). Detected by chemiluminescence.



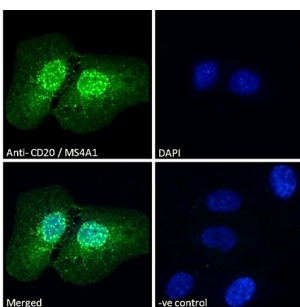
abx430201 (0.01 µg/ml) staining of Daudi (A) and negative control HepG2 (B) cell lysate (35 µg protein in RIPA buffer). Detected by chemiluminescence.



abx430201 (2 µg/ml) staining of paraffin embedded Human Tonsil. Steamed antigen retrieval with citrate buffer pH 6, HRP-staining.



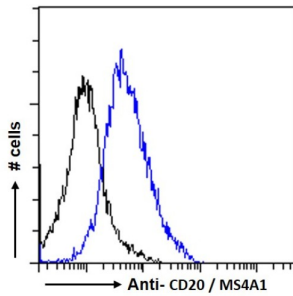
Immunofluorescence analysis of paraformaldehyde fixed Jurkat cells. Primary incubation 1hr (10 µg/ml) followed by AF488 secondary antibody (2 µg/ml), showing membrane staining. The nuclear stain is DAPI (blue). Negative control: Unimmunized goat IgG (10 µg/ml) followed by AF488 secondary antibody (2 µg/ml).



Immunofluorescence analysis of paraformaldehyde fixed U2OS cells, permeabilized with 0.15% Triton. Primary incubation 1hr (10 µg/ml) followed by AF488 secondary antibody (2 µg/ml), showing nuclear and cytoplasmic staining. The nuclear stain is DAPI (blue). Negative control: Unimmunized goat IgG (10 µg/ml) followed by AF488 secondary antibody (2 µg/ml).

Datasheet

Version: 1.0.0
Revision date: 27 Dec 2024



Flow cytometry analysis of paraformaldehyde fixed Daudi cells (blue line), permeabilized with 0.5% Triton. Primary incubation 1hr (10 µg/ml) followed by AF88 secondary antibody (1 µg/ml). IgG control: Unimmunized goat IgG (black line) followed by AF488 secondary antibody.

MS4A1 Antibody is a Goat Polyclonal antibody against MS4A1.

Target:	B-Lymphocyte Antigen CD20 (MS4A1)
Clonality:	Polyclonal
Reactivity:	Human
Tested Applications:	P-ELISA, WB, IF/ICC, FCM
Host:	Goat
Recommended dilutions:	P-ELISA: 1/128000. Optimal dilutions/concentrations should be determined by the end user.
Conjugation:	Unconjugated
Immunogen:	abx269046 - C-Terminus: CQDQESSPIENDSSP
Isotype:	IgG
Form:	Liquid
Purification:	Purified from goat serum by ammonium sulphate precipitation followed by antigen affinity chromatography using the immunizing peptide.
Storage:	Aliquot and store at -20°C. Avoid repeated freeze/thaw cycles.
Gene Symbol:	MS4A1
GeneID:	931
NCBI Accession:	NP_068769.2, NP_690605.1
Buffer:	Tris saline, pH 7.3, containing 0.02% sodium azide and 0.5% bovine serum albumin.

Datasheet

Version: 1.0.0

Revision date: 27 Dec 2024



Concentration: 0.5 mg/ml

Note: This product is for research use only.

For Reference Only