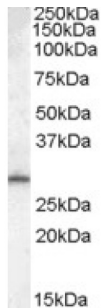


Probable Bifunctional Methylenetetrahydrofolate Dehydrogenase/cyclohydrolase 2 (MTHFD2L) Antibody

Catalogue No.: abx432988



abx432988 (0.1 µg/ml) staining of Human Testis lysate (35 µg protein in RIPA buffer). Primary incubation was 1 hour. Detected by chemiluminescence.

MTHFD2L Antibody is a Goat Polyclonal antibody against MTHFD2L.

Target:	Probable Bifunctional Methylenetetrahydrofolate Dehydrogenase/cyclohydrolase 2 (MTHFD2L)
Clonality:	Polyclonal
Reactivity:	Human
Tested Applications:	P-ELISA, WB
Host:	Goat
Recommended dilutions:	P-ELISA: 1/128000. Optimal dilutions/concentrations should be determined by the end user.
Conjugation:	Unconjugated
Immunogen:	abx615489 - N-Terminus: KHIQKEIQRGVES-C
Isotype:	IgG
Form:	Liquid
Purification:	Purified from goat serum by ammonium sulphate precipitation followed by antigen affinity chromatography using the immunizing peptide.
Storage:	Aliquot and store at -20°C. Avoid repeated freeze/thaw cycles.
Gene Symbol:	MTHFD2L
GeneID:	441024

Datasheet

Version: 2.0.0

Revision date: 12 Jan 2025



NCBI Accession: NP_001004346.2

Buffer: Tris saline, pH 7.3, containing 0.02% sodium azide and 0.5% bovine serum albumin.

Concentration: 0.5 mg/ml

Note: This product is for research use only.

For Reference Only