

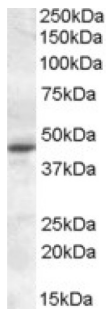
Datasheet

Version: 2.0.0
Revision date: 25 Nov 2024



Melatonin Receptor 1A (MTNR1A) Antibody

Catalogue No.: abx432994



abx432994 (0.1 µg/ml) staining of Rat Retina lysate (35 µg protein in RIPA buffer). Primary incubation was 1 hour. Detected by chemiluminescence.

MTNR1A Antibody is a Goat Polyclonal antibody against MTNR1A.

Target:	Melatonin Receptor 1A (MTNR1A)
Clonality:	Polyclonal
Reactivity:	Rat
Tested Applications:	P-ELISA, WB
Host:	Goat
Recommended dilutions:	P-ELISA: 1/16000. Optimal dilutions/concentrations should be determined by the end user.
Conjugation:	Unconjugated
Immunogen:	abx615879 - Internal region: C-SLKYDKLYSSKNS
Isotype:	IgG
Form:	Liquid
Purification:	Purified from goat serum by ammonium sulphate precipitation followed by antigen affinity chromatography using the immunizing peptide.
Storage:	Aliquot and store at -20°C. Avoid repeated freeze/thaw cycles.
Gene Symbol:	MTNR1A
GeneID:	4543
NCBI Accession:	NP_005949.1

Datasheet

Version: 2.0.0
Revision date: 25 Nov 2024



Buffer: Tris saline, pH 7.3, containing 0.02% sodium azide and 0.5% bovine serum albumin.

Concentration: 0.5 mg/ml

Note: This product is for research use only.

For Reference Only