

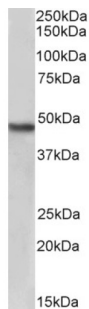
# Datasheet

Version: 1.0.0  
Revision date: 28 Nov 2024



## Protein NDRG1 (NDRG1) Antibody (Biotin)

Catalogue No.: abx431449



Western blot analysis of Human Kidney lysate (35 µg protein in RIPA buffer), using biotin-conjugated Protein NDRG1 (NDRG1) Antibody (2 µg/ml, 1 hour). Detected by chemiluminescence, using streptavidin-HRP and using NAP blocker as a substitute for skimmed milk.

NDRG1 Antibody is a Goat Polyclonal antibody against NDRG1 ([abx431448](#)) conjugated to biotin.

**Target:** Protein NDRG1 (NDRG1)

**Clonality:** Polyclonal

**Reactivity:** Human

**Tested Applications:** P-ELISA, WB

**Host:** Goat

**Recommended dilutions:** P-ELISA: 1/32000. Optimal dilutions/concentrations should be determined by the end user.

**Conjugation:** Biotin

**Immunogen:** C-Terminus: GNSAGPKSMEVSC

**Isotype:** IgG

**Form:** Liquid

**Purification:** Purified from goat serum by ammonium sulphate precipitation followed by antigen affinity chromatography using the immunizing peptide.

**Storage:** Aliquot and store at -20°C. Avoid repeated freeze/thaw cycles.

**Gene Symbol:** NDRG1

**GeneID:** [10397](#) [17990](#)

**NCBI Accession:** NP\_006087.2

# Datasheet

Version: 1.0.0  
Revision date: 28 Nov 2024



**Buffer:** Tris saline, pH 7.3, containing 0.02% sodium azide and 0.5% bovine serum albumin.

**Concentration:** 0.5 mg/ml

**Note:** This product is for research use only.

For Reference Only