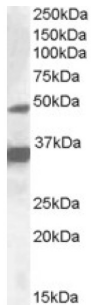
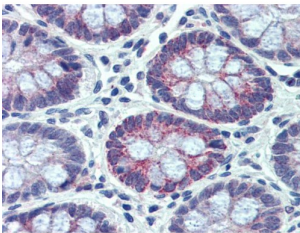


## Nuclear Receptor Subfamily 1 Group I Member 2 (NR1I2) Antibody

Catalogue No.: abx430038



abx430038 (1 µg/ml) staining of HepG2 lysate (35 µg protein in RIPA buffer). Detected by chemiluminescence.



abx430038 (3.75 µg/ml) staining of paraffin embedded Human Small Intestine. Steamed antigen retrieval with citrate buffer pH 6, AP-staining.

NR1I2 Antibody is a Goat Polyclonal antibody against NR1I2.

**Target:** Nuclear Receptor Subfamily 1 Group I Member 2 (NR1I2)

**Clonality:** Polyclonal

**Reactivity:** Human

**Tested Applications:** P-ELISA, WB, IHC

**Host:** Goat

**Recommended dilutions:** P-ELISA: 1/4000. Optimal dilutions/concentrations should be determined by the end user.

**Conjugation:** Unconjugated

**Immunogen:** [abx615822](#) - Internal region: EQFAITLKSYYIECNR

**Isotype:** IgG

**Form:** Liquid

**Purification:** Purified from goat serum by ammonium sulphate precipitation followed by antigen affinity chromatography using the immunizing peptide.

# Datasheet

Version: 1.0.0

Revision date: 15 Apr 2025



<b>Storage:</b>	Aliquot and store at -20°C. Avoid repeated freeze/thaw cycles.
<b>Gene Symbol:</b>	NR1I2
<b>GeneID:</b>	<a href="#">8856</a>
<b>NCBI Accession:</b>	NP_003880.3, NP_071285.1, NP_148934.1
<b>Buffer:</b>	Tris saline, pH 7.3, containing 0.02% sodium azide and 0.5% bovine serum albumin.
<b>Concentration:</b>	0.5 mg/ml
<b>Note:</b>	THIS PRODUCT IS FOR RESEARCH USE ONLY. NOT FOR USE IN DIAGNOSTIC, THERAPEUTIC OR COSMETIC PROCEDURES. NOT FOR HUMAN OR ANIMAL CONSUMPTION.

For Reference Only