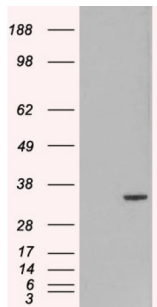


Origin Recognition Complex Subunit 6 (ORC6L) Antibody

Catalogue No.: abx433075



HEK293 overexpressing ORC6L and probed with abx433075 (mock transfection in first lane).

ORC6L Antibody is a Goat Polyclonal antibody against ORC6L.

Target:	Origin Recognition Complex Subunit 6 (ORC6L)
Clonality:	Polyclonal
Reactivity:	Human
Tested Applications:	WB
Host:	Goat
Recommended dilutions:	WB: 1-3 µg/ml. Optimal dilutions/concentrations should be determined by the end user.
Conjugation:	Unconjugated
Immunogen:	abx269024 - C-Terminus: C-ENAASAQKATAE
Isotype:	IgG
Form:	Liquid
Purification:	Purified from goat serum by ammonium sulphate precipitation followed by antigen affinity chromatography using the immunizing peptide.
Storage:	Aliquot and store at -20°C. Avoid repeated freeze/thaw cycles.
Gene Symbol:	ORC6L
GeneID:	23594
NCBI Accession:	NP_055136.1

Datasheet

Version: 2.0.0

Revision date: 28 Mar 2025



Buffer: Tris saline, pH 7.3, containing 0.02% sodium azide and 0.5% bovine serum albumin.

Concentration: 0.5 mg/ml

Note: THIS PRODUCT IS FOR RESEARCH USE ONLY. NOT FOR USE IN DIAGNOSTIC, THERAPEUTIC OR COSMETIC PROCEDURES. NOT FOR HUMAN OR ANIMAL CONSUMPTION.

For Reference Only