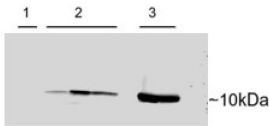


Parvalbumin (PVALB) Antibody

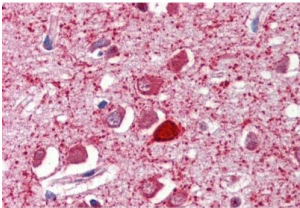
Catalogue No.: abx433095



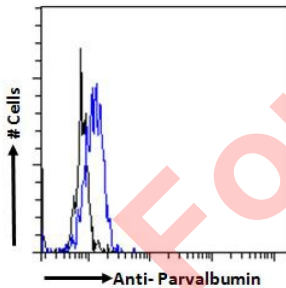
abx433095 (0.15 µg/ml) staining of adenovirus-mediated gene transfer in Rat Heart cells 1) Untransfected, 2) transient transfection with Human PVALB. 3) Untransfected Rat Skeletal Muscle. Detected by chemiluminescence.



abx433095 (0.3 µg/ml) staining of Human Cerebellum lysate (35 µg protein in RIPA buffer). Detected by chemiluminescence.



abx433095 (2.5 µg/ml) staining of paraffin embedded Human Cortex. Steamed antigen retrieval with citrate buffer pH 6, AP-staining.



Flow cytometry analysis of paraformaldehyde fixed Kelly cells (blue line), permeabilized with 0.5% Triton. Primary incubation 1hr (10 µg/ml) followed by AF488 secondary antibody (2 µg/ml). IgG control: Unimmunized goat IgG (black line) followed by AF488 secondary antibody.

Parvalbumin Antibody is a Goat Polyclonal antibody against Parvalbumin.

Target: Parvalbumin (PVALB)

Clonality: Polyclonal

Reactivity: Human, Rat

Datasheet

Version: 2.0.0
Revision date: 24 Nov 2024



Tested Applications: P-ELISA, WB, IHC, FCM

Host: Goat

Recommended dilutions: P-ELISA: 1/32000. Optimal dilutions/concentrations should be determined by the end user.

Conjugation: Unconjugated

Immunogen: [abx269691](#) - C-Terminus: C-GVDEFSTLVAES

Isotype: IgG

Form: Liquid

Purification: Purified from goat serum by ammonium sulphate precipitation followed by antigen affinity chromatography using the immunizing peptide.

Storage: Aliquot and store at -20°C. Avoid repeated freeze/thaw cycles.

Gene Symbol: PVALB

GeneID: [5816](#)

NCBI Accession: NP_002845.1

Buffer: Tris saline, pH 7.3, containing 0.02% sodium azide and 0.5% bovine serum albumin.

Concentration: 0.5 mg/ml

Note: This product is for research use only.

For Reference Only