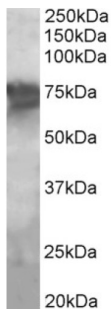
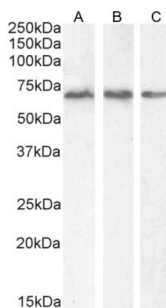


Phosphoenolpyruvate Carboxykinase, Mitochondrial (PCK2) Antibody

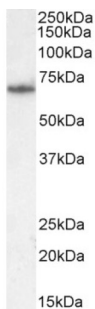
Catalogue No.: abx430282



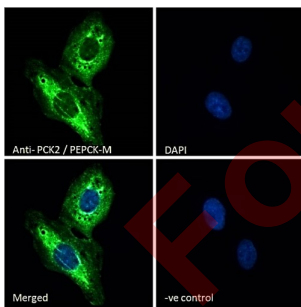
abx430282 (2 µg/ml) staining of Human Liver lysate (35 µg protein in RIPA buffer). Primary incubation was 1 hour. Detected by chemiluminescence.



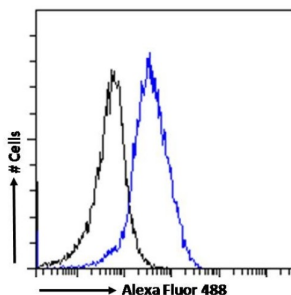
abx430282 (2 µg/ml) staining of A431 (A), HEK293 (B) and (1 µg/ml) HepG2 (C) cell lysate (35 µg protein in RIPA buffer). Detected by chemiluminescence.



abx430282 (2 µg/ml) staining of NIH3T3 cell lysate (35 µg protein in RIPA buffer). Detected by chemiluminescence.



Immunofluorescence analysis of paraformaldehyde fixed U2OS cells, permeabilized with 0.15% Triton. Primary incubation 1hr (10 µg/ml) followed by AF488 secondary antibody (2 µg/ml), showing cytoplasmic staining. The nuclear stain is DAPI (blue). Negative control: Unimmunized goat IgG (10 µg/ml) followed by AF488 secondary antibody (2 µg/ml).



Flow cytometry analysis of paraformaldehyde fixed MCF7 cells (blue line), permeabilized with 0.5% Triton. Primary incubation 1hr (10 µg/ml) followed by AF488 secondary antibody (1 µg/ml). IgG control: Unimmunized goat IgG (black line) followed by AF488 secondary antibody.

Datasheet

Version: 2.0.0
Revision date: 13 Mar 2025



PCK2 Antibody is a Goat Polyclonal antibody against PCK2.

Target:	Phosphoenolpyruvate Carboxykinase, Mitochondrial (PCK2)
Clonality:	Polyclonal
Reactivity:	Human
Tested Applications:	P-ELISA, WB, IF/ICC, FCM
Host:	Goat
Recommended dilutions:	P-ELISA: 1/4000. Optimal dilutions/concentrations should be determined by the end user.
Conjugation:	Unconjugated
Immunogen:	abx269763 - Internal region: KPWKPGDKEPCAH
Isotype:	IgG
Form:	Liquid
Purification:	Purified from goat serum by ammonium sulphate precipitation followed by antigen affinity chromatography using the immunizing peptide.
Storage:	Aliquot and store at -20°C. Avoid repeated freeze/thaw cycles.
Gene Symbol:	PCK2
GeneID:	5106
NCBI Accession:	NP_004554.3, NP_001278485.1
Buffer:	Tris saline, pH 7.3, containing 0.02% sodium azide and 0.5% bovine serum albumin.
Concentration:	0.5 mg/ml
Note:	THIS PRODUCT IS FOR RESEARCH USE ONLY. NOT FOR USE IN DIAGNOSTIC, THERAPEUTIC OR COSMETIC PROCEDURES. NOT FOR HUMAN OR ANIMAL CONSUMPTION.